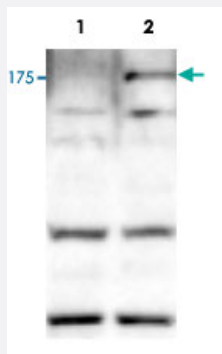


Jarid1b polyclonal antibody

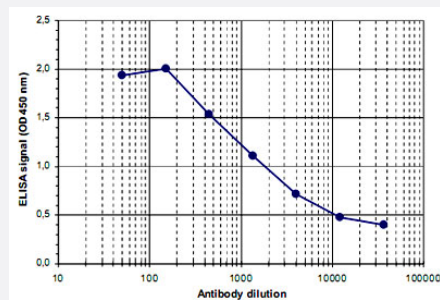
Catalog # PAB14079 Size 100 uL

Applications



Western Blot (Cell lysate)

Western blot was performed on whole cell lysates from mouse fibroblasts (Lane 1, NIH/3T3) and embryonic stem cells (Lane 2, E14Tg2a) with Jarid1b polyclonal antibody (Cat # PAB14079), diluted 1 : 500 in BSA/PBS-Tween.



Enzyme-linked Immunoabsorbent Assay

ELISA was performed using a serial dilution of Jarid1b polyclonal antibody (Cat # PAB14079). The plates were coated with the peptide used for immunization of the rabbit. By plotting the absorbance against the antibody dilution, the titer of the crude serum was estimated to be 1 : 2,200.

Specification

Product Description	Rabbit polyclonal antibody raised against synthetic peptide of Jarid1b.
Immunogen	A synthetic peptide (conjugated with KLH) corresponding to internal region of mouse Jarid1b.
Host	Rabbit
Reactivity	Mouse
Form	Liquid

Recommend Usage	ELISA (1:100-1:200) Western Blot (1:500) The optimal working dilution should be determined by the end user.
Storage Buffer	In serum (0.05% sodium azide)
Storage Instruction	Store at -20°C. For long term storage store at -80°C. Aliquot to avoid repeated freezing and thawing.
Note	This product contains sodium azide: a POISONOUS AND HAZARDOUS SUBSTANCE which should be handled by trained staff only.

Applications

- Western Blot (Cell lysate)

Western blot was performed on whole cell lysates from mouse fibroblasts (Lane 1, NIH/3T3) and embryonic stem cells (Lane 2, E14Tg2a) with Jarid1b polyclonal antibody (Cat # PAB14079), diluted 1 : 500 in BSA/PBS-Tween.

- Enzyme-linked Immunoabsorbent Assay

ELISA was performed using a serial dilution of Jarid1b polyclonal antibody (Cat # PAB14079). The plates were coated with the peptide used for immunization of the rabbit. By plotting the absorbance against the antibody dilution, the titer of the crude serum was estimated to be 1 : 2,200.

Gene Info — Jarid1b

Entrez GeneID	75605
Protein Accession#	Q9UGL1 (human)
Gene Name	Jarid1b
Gene Alias	2010009J12Rik, 2210016I17Rik, AW556288, D1Etd202e, KDM5B, KIAA4034, PLU-1, PUT1, Plu1, RBBP2H1A, Rb-Bp2, mKIAA4034
Gene Description	jumonji, AT rich interactive domain 1B (Rbp2 like)
Gene Ontology	Hyperlink
Gene Summary	O
Other Designations	OTTMUSP00000018570 PLU1 putative DNA/chromatin binding motif 1