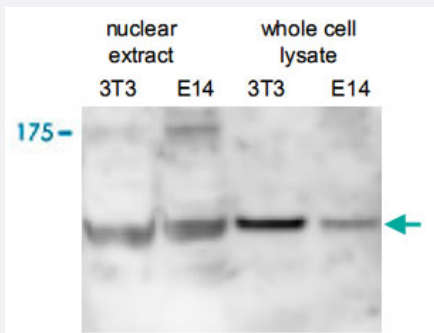


Ctr9 polyclonal antibody

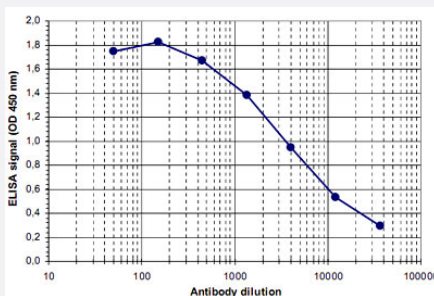
Catalog # PAB14078 Size 100 uL

Applications



Western Blot (Cell lysate)

Western blot was performed on nuclear extracts and whole cell lysates from mouse fibroblasts (NIH/3T3) and embryonic stem cells (E14Tg2a) with Ctr9 polyclonal antibody (Cat # PAB14078), diluted 1 : 500 in BSA/PBS-Tween.



Enzyme-linked Immunoabsorbent Assay

ELISA was performed using a serial dilution of Ctr9 polyclonal antibody (Cat # PAB14078). The plates were coated with the peptide used for immunization of the rabbit. By plotting the absorbance against the antibody dilution, the titer of the crude serum was estimated to be 1 : 4,600.

Specification

Product Description	Rabbit polyclonal antibody raised against synthetic peptide of Ctr9.
Immunogen	A synthetic peptide (conjugated with KLH) corresponding to N-terminus of mouse Ctr9.
Host	Rabbit
Reactivity	Mouse
Form	Liquid
Recommend Usage	ELISA (1:100-1:500) Western Blot (1:500) The optimal working dilution should be determined by the end user.

Storage Buffer	In serum (0.05% sodium azide)
Storage Instruction	Store at -20°C. For long term storage store at -80°C. Aliquot to avoid repeated freezing and thawing.
Note	This product contains sodium azide: a POISONOUS AND HAZARDOUS SUBSTANCE which should be handled by trained staff only.

Applications

- Western Blot (Cell lysate)

Western blot was performed on nuclear extracts and whole cell lysates from mouse fibroblasts (NIH/3T3) and embryonic stem cells (E14Tg2a) with Ctr9 polyclonal antibody (Cat # PAB14078), diluted 1 : 500 in BSA/PBS-Tween.

- Enzyme-linked Immunoabsorbent Assay

ELISA was performed using a serial dilution of Ctr9 polyclonal antibody (Cat # PAB14078). The plates were coated with the peptide used for immunization of the rabbit. By plotting the absorbance against the antibody dilution, the titer of the crude serum was estimated to be 1 : 4,600.

Gene Info — Ctr9

Entrez GeneID	22083
Protein Accession#	Q6PD62 (human)
Gene Name	Ctr9
Gene Alias	AA409336, KIAA0155, Sh2bp1, Tsbp, Tsp, mKIAA0155
Gene Description	Ctr9, Paf1/RNA polymerase II complex component, homolog (S. cerevisiae)
Gene Ontology	Hyperlink
Gene Summary	Paf1/RNA polymerase II complex component
Other Designations	OTTMUSP00000028282 SH2 domain binding protein 1 (tetratricopeptide repeat containing) TPR-containing, SH2-binding phosphoprotein