

# Fkbp5 polyclonal antibody

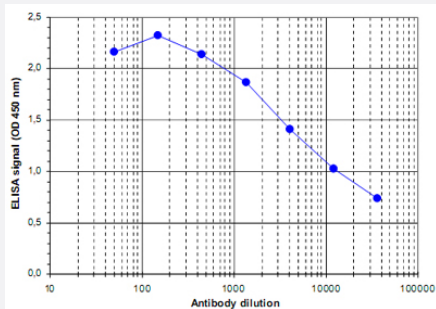
Catalog # PAB14076      Size 100 uL

## Applications



### Western Blot (Cell lysate)

Western blot was performed on whole cell lysates from mouse fibroblasts (Lane 1, NIH/3T3) and embryonic stem cells (Lane 2, E14Tg2a) with Fkbp5 polyclonal antibody (Cat # PAB14076), diluted 1 : 500 in BSA/PBS-Tween.



### Enzyme-linked Immunoabsorbent Assay

ELISA was performed using a serial dilution of Fkbp5 polyclonal antibody (Cat # PAB14076).

The plates were coated with a mix of the peptides used for immunization of the rabbit.

By plotting the absorbance against the antibody dilution, the titer of the crude serum was estimated to be 1 : 9,400.

## Specification

<b>Product Description</b>	Rabbit polyclonal antibody raised against synthetic peptide of Fkbp5.
<b>Immunogen</b>	A mixture of synthetic peptides (conjugated with KLH) corresponding to internal region of mouse Fkbp5.
<b>Host</b>	Rabbit
<b>Reactivity</b>	Mouse
<b>Form</b>	Liquid

<b>Recommend Usage</b>	ELISA (1:100-1:500) Western Blot (1:500) The optimal working dilution should be determined by the end user.
<b>Storage Buffer</b>	In serum (0.05% sodium azide)
<b>Storage Instruction</b>	Store at -20°C. For long term storage store at -80°C. Aliquot to avoid repeated freezing and thawing.
<b>Note</b>	This product contains sodium azide: a POISONOUS AND HAZARDOUS SUBSTANCE which should be handled by trained staff only.

## Applications

- Western Blot (Cell lysate)

Western blot was performed on whole cell lysates from mouse fibroblasts (Lane 1, NIH/3T3) and embryonic stem cells (Lane 2, E14Tg2a) with Fkbp5 polyclonal antibody (Cat # PAB14076), diluted 1 : 500 in BSA/PBS-Tween.

- Enzyme-linked Immunoabsorbent Assay

ELISA was performed using a serial dilution of Fkbp5 polyclonal antibody (Cat # PAB14076).

The plates were coated with a mix of the peptides used for immunization of the rabbit.

By plotting the absorbance against the antibody dilution, the titer of the crude serum was estimated to be 1 : 9,400.

## Gene Info — Fkbp5

<b>Entrez GeneID</b>	<a href="#">14229</a>
<b>Protein Accession#</b>	<a href="#">Q13451 (human)</a>
<b>Gene Name</b>	Fkbp5
<b>Gene Alias</b>	51kDa, D17Ert592e, Dit1, FKBP51
<b>Gene Description</b>	FK506 binding protein 5
<b>Gene Ontology</b>	<a href="#">Hyperlink</a>
<b>Other Designations</b>	OTTMUSP00000028876 OTTMUSP00000028878