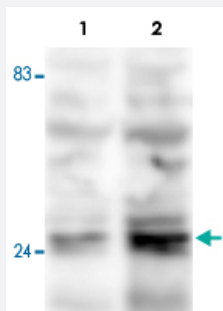


Fkbp3 polyclonal antibody

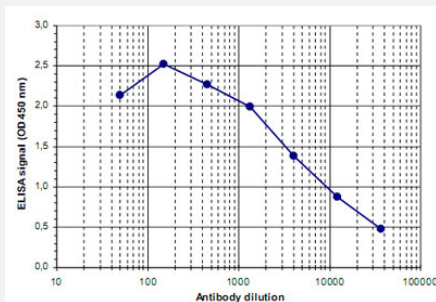
Catalog # PAB14075 Size 100 uL

Applications



Western Blot (Cell lysate)

Western blot was performed on whole cell lysates from mouse fibroblasts (Lane 1, NIH/3T3) and embryonic stem cells (Lane 2, E14Tg2a) with Fkbp3 polyclonal antibody (Cat # PAB14075), diluted 1 : 500 in BSA/PBS-Tween.



Enzyme-linked Immunoabsorbent Assay

ELISA was performed using a serial dilution of Fkbp3 polyclonal antibody (Cat # PAB14075).

The plates were coated with the peptide used for immunization of the rabbit. By plotting the absorbance against the antibody dilution, the titer of the crude serum was estimated to be 1 : 5,400.

Specification

Product Description	Rabbit polyclonal antibody raised against synthetic peptide of Fkbp3.
Immunogen	A synthetic peptide (conjugated with KLH) corresponding to internal region of mouse Fkbp3.
Host	Rabbit
Reactivity	Mouse
Form	Liquid
Recommend Usage	ELISA (1:100-1:200) Western Blot (1:500) The optimal working dilution should be determined by the end user.

Storage Buffer	In serum (0.05% sodium azide)
Storage Instruction	Store at -20°C. For long term storage store at -80°C. Aliquot to avoid repeated freezing and thawing.
Note	This product contains sodium azide: a POISONOUS AND HAZARDOUS SUBSTANCE which should be handled by trained staff only.

Applications

- Western Blot (Cell lysate)

Western blot was performed on whole cell lysates from mouse fibroblasts (Lane 1, NIH/3T3) and embryonic stem cells (Lane 2, E14Tg2a) with Fkbp3 polyclonal antibody (Cat # PAB14075), diluted 1 : 500 in BSA/PBS-Tween.

- Enzyme-linked Immunoabsorbent Assay

ELISA was performed using a serial dilution of Fkbp3 polyclonal antibody (Cat # PAB14075).

The plates were coated with the peptide used for immunization of the rabbit.

By plotting the absorbance against the antibody dilution, the titer of the crude serum was estimated to be 1 : 5,400.

Gene Info — Fkbp3

Entrez GeneID	30795
Protein Accession#	Q00688 (human)
Gene Name	Fkbp3
Gene Alias	25kDa, FKBP25
Gene Description	FK506 binding protein 3
Gene Ontology	Hyperlink
Gene Summary	25kDa FK506-binding protein 3 (25kD)
Other Designations	FK506 binding protein 3, 25kDa FK506-binding protein 3 (25kD)