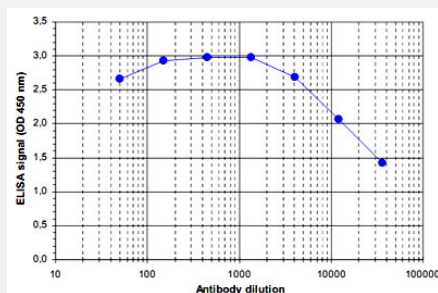


# MII2 polyclonal antibody

Catalog # PAB14066      Size 100 uL

## Applications



### Enzyme-linked Immunoabsorbent Assay

ELISA was performed using a serial dilution of MII2 polyclonal antibody (Cat # PAB14066).

The wells were coated with the peptides used for immunisation of the rabbit. By plotting the absorbance against the antibody dilution, the titer of the crude serum was estimated to be 1 : 32,500.

## Specification

<b>Product Description</b>	Rabbit polyclonal antibody raised against synthetic peptide of MII2.
<b>Immunogen</b>	A mixture of synthetic peptides (conjugated with KLH) that two corresponding to N-terminus and one to internal region of mouse MII2.
<b>Host</b>	Rabbit
<b>Reactivity</b>	Mouse
<b>Form</b>	Liquid
<b>Recommend Usage</b>	ELISA (1:200-1:2000) Western Blot (1:500) The optimal working dilution should be determined by the end user.
<b>Storage Buffer</b>	In serum (0.05% sodium azide)
<b>Storage Instruction</b>	Store at -20°C. For long term storage store at -80°C. Aliquot to avoid repeated freezing and thawing.
<b>Note</b>	This product contains sodium azide: a POISONOUS AND HAZARDOUS SUBSTANCE which should be handled by trained staff only.

## Applications

- Western Blot
- Enzyme-linked Immunoabsorbent Assay

ELISA was performed using a serial dilution of MII2 polyclonal antibody (Cat # PAB14066).

The wells were coated with the peptides used for immunisation of the rabbit.

By plotting the absorbance against the antibody dilution, the titer of the crude serum was estimated to be 1 : 32,500.

## Gene Info — MII2

Entrez GeneID	<a href="#">381022</a>
---------------	------------------------

Protein Accession#	<a href="#">Q9UMN6 (human)</a>
--------------------	--------------------------------

Gene Name	MI2
-----------	-----

Gene Alias	ALR, BC032281, BC058659, KMT2B
------------	--------------------------------

Gene Description	myeloid/lymphoid or mixed-lineage leukemia 2
------------------	--

Gene Ontology	<a href="#">Hyperlink</a>
---------------	---------------------------

Other Designations	-
--------------------	---