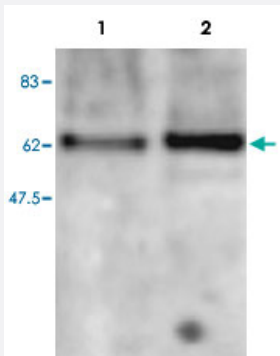


Mbd2 polyclonal antibody

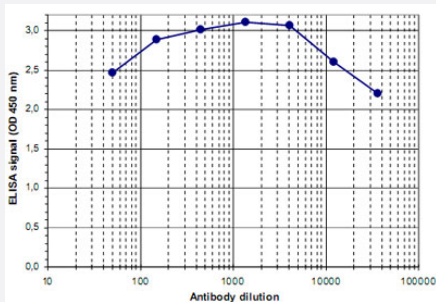
Catalog # PAB14065 Size 100 uL

Applications



Western Blot (Cell lysate)

Western blot was performed on nuclear extracts from mouse fibroblastst (NIH/3T3) and embryonic stem cells (E14Tg2a) with Mbd2 polyclonal antibody (Cat # PAB14065), diluted 1 : 500 in BSA/PBS-Tween.



Enzyme-linked Immunoabsorbent Assay

ELISA was performed using a serial dilution of Mbd2 polyclonal antibody (Cat # PAB14065). By plotting the absorbance against the antibody dilution, the titer of the crude serum was estimated to be 1 : 185,000.

Specification

Product Description	Rabbit polyclonal antibody raised against synthetic peptide of Mbd2.
Immunogen	A synthetic peptide (conjugated with KLH) corresponding to internal region of mouse Mbd2.
Host	Rabbit
Reactivity	Mouse
Form	Liquid

Recommend Usage	ELISA (1:1000-1:4000) Western Blot (1:500) The optimal working dilution should be determined by the end user.
Storage Buffer	In serum (0.05% sodium azide)
Storage Instruction	Store at -20°C. For long term storage store at -80°C. Aliquot to avoid repeated freezing and thawing.
Note	This product contains sodium azide: a POISONOUS AND HAZARDOUS SUBSTANCE which should be handled by trained staff only.

Applications

- Western Blot (Cell lysate)

Western blot was performed on nuclear extracts from mouse fibroblastst (NIH/3T3) and embryonic stem cells (E14Tg2a) with Mbd2 polyclonal antibody (Cat # PAB14065), diluted 1 : 500 in BSA/PBS-Tween.

- Enzyme-linked Immunoabsorbent Assay

ELISA was performed using a serial dilution of Mbd2 polyclonal antibody (Cat # PAB14065). By plotting the absorbance against the antibody dilution, the titer of the crude serum was estimated to be 1 : 185,000.

Gene Info — Mbd2

Entrez GeneID	17191
Protein Accession#	Q9UBB5 (human)
Gene Name	Mbd2
Gene Alias	MBD2a
Gene Description	methyl-CpG binding domain protein 2
Gene Ontology	Hyperlink
Other Designations	-