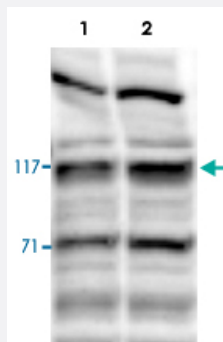


Hira polyclonal antibody

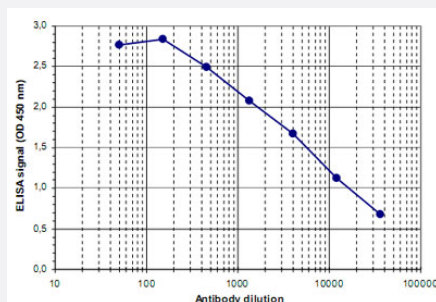
Catalog # PAB14064 Size 100 uL

Applications



Western Blot (Cell lysate)

Western blot was performed on whole cell lysates from mouse fibroblasts (Lane 1, NIH/3T3) and embryonic stem cells (Lane 2, E14Tg2a) with Hira polyclonal antibody (Cat # PAB14064), diluted 1 : 1,000 in BSA/PBS-Tween.



Enzyme-linked Immunoabsorbent Assay

ELISA was performed using a serial dilution of Hira polyclonal antibody (Cat # PAB14064).

The wells were coated with the peptide used for immunisation of the rabbit. By plotting the absorbance against the antibody dilution, the titer of the crude serum was estimated to be 1 : 6,300.

Specification

Product Description	Rabbit polyclonal antibody raised against synthetic peptide of Hira.
Immunogen	A synthetic peptide (conjugated with KLH) corresponding to internal region of mouse Hira.
Host	Rabbit
Reactivity	Mouse
Form	Liquid
Recommend Usage	ELISA (1:100-1:200) Western Blot (1:1000) The optimal working dilution should be determined by the end user.

Storage Buffer	In serum (0.05% sodium azide)
Storage Instruction	Store at -20°C. For long term storage store at -80°C. Aliquot to avoid repeated freezing and thawing.
Note	This product contains sodium azide: a POISONOUS AND HAZARDOUS SUBSTANCE which should be handled by trained staff only.

Applications

- Western Blot (Cell lysate)

Western blot was performed on whole cell lysates from mouse fibroblasts (Lane 1, NIH/3T3) and embryonic stem cells (Lane 2, E14Tg2a) with Hira polyclonal antibody (Cat # PAB14064), diluted 1 : 1,000 in BSA/PBS-Tween.

- Enzyme-linked Immunoabsorbent Assay

ELISA was performed using a serial dilution of Hira polyclonal antibody (Cat # PAB14064).

The wells were coated with the peptide used for immunisation of the rabbit.

By plotting the absorbance against the antibody dilution, the titer of the crude serum was estimated to be 1 : 6,300.

Gene Info — Hira

Entrez GeneID	15260
Protein Accession#	P54198 (human)
Gene Name	Hira
Gene Alias	AA138857, D16Ert95e, N28177, Tuple1
Gene Description	histone cell cycle regulation defective homolog A (S. cerevisiae)
Gene Ontology	Hyperlink
Other Designations	TUP1-like enhancer of split gene 1 histone cell cycle regulation defective homolog A