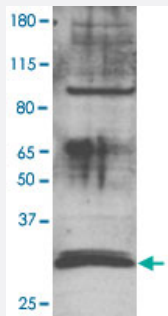


MBD3 polyclonal antibody

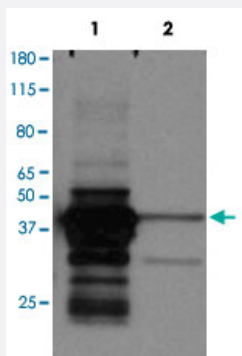
Catalog # PAB14055 Size 100 uL

Applications



Western Blot (Cell lysate)

Western blot was performed on nuclear extracts from a Human leukemic monocyte lymphoma cell line (U-937 NE, 60 ug) with MBD3 polyclonal antibody (Cat # PAB14055), diluted 1 : 2,000 in TBS-Tween containing 5% skimmed milk.

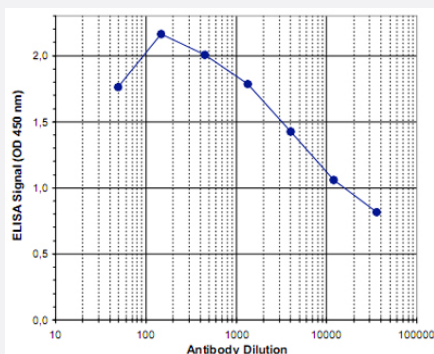


Western Blot (Transfected lysate)

TY1-tagged MBD3 (TTE-MBD3) was over-expressed in osteosarcoma cells (U-2 OS).

Nuclear extracts were prepared and separated by electrophoresis.

An antibody directed against the TY1 tag (Lane 1) or crude serum (Lane 2) MBD3 polyclonal antibody (Cat # PAB14055) (diluted 1 : 2,000 in TBS-Tween containing 5% skimmed milk) were used to detect TTE-MBD3.



Enzyme-linked Immunoabsorbent Assay

ELISA was performed using a serial dilution of MBD3 polyclonal antibody (Cat # PAB14055) in antigen coated wells. By plotting the absorbance against the crude serum dilution, the titer of the antibody was estimated to be 1 : 13,890.

Specification

Product Description

Rabbit polyclonal antibody raised against synthetic peptide of MBD3.

Immunogen	A synthetic peptide (conjugated with KLH) corresponding to human MBD3.
Host	Rabbit
Reactivity	Human
Form	Liquid
Recommend Usage	ELISA (1:100-1:500) Western Blot (1:2 000) The optimal working dilution should be determined by the end user.
Storage Buffer	In serum (0.05% sodium azide)
Storage Instruction	Store at -20°C. For long term storage store at -80°C. Aliquot to avoid repeated freezing and thawing.
Note	This product contains sodium azide: a POISONOUS AND HAZARDOUS SUBSTANCE which should be handled by trained staff only.

Applications

- Western Blot (Cell lysate)

Western blot was performed on nuclear extracts from a Human leukemic monocyte lymphoma cell line (U-937 NE, 60 ug) with MBD3 polyclonal antibody (Cat # PAB14055), diluted 1 : 2,000 in TBS-Tween containing 5% skimmed milk.

- Western Blot (Transfected lysate)

TY1-tagged MBD3 (TTE-MBD3) was over-expressed in osteosarcoma cells (U-2 OS).

Nuclear extracts were prepared and separated by electrophoresis.

An antibody directed against the TY1 tag (Lane 1) or crude serum (Lane 2) MBD3 polyclonal antibody (Cat # PAB14055) (diluted 1 : 2,000 in TBS-Tween containing 5% skimmed milk) were used to detect TTE-MBD3.

- Enzyme-linked Immunoabsorbent Assay

ELISA was performed using a serial dilution of MBD3 polyclonal antibody (Cat # PAB14055) in antigen coated wells. By plotting the absorbance against the crude serum dilution, the titer of the antibody was estimated to be 1 : 13,890.

Gene Info — MBD3

Entrez GeneID	53615
Protein Accession#	O95983
Gene Name	MBD3
Gene Alias	-

Gene Description	methyl-CpG binding domain protein 3
Omim ID	603573
Gene Ontology	Hyperlink
Gene Summary	<p>DNA methylation is the major modification of eukaryotic genomes and plays an essential role in mammalian development. Human proteins MECP2, MBD1, MBD2, MBD3, and MBD4 comprise a family of nuclear proteins related by the presence in each of a methyl-CpG binding domain (MBD). However, unlike the other family members, MBD3 is not capable of binding to methylated DNA. The predicted MBD3 protein shares 71% and 94% identity with MBD2 (isoform 1) and mouse Mbd3. MBD3 is a subunit of the NuRD, a multisubunit complex containing nucleosome remodeling and histone deacetylase activities. MBD3 mediates the association of metastasis-associated protein 2 (MTA2) with the core histone deacetylase complex. [provided by RefSeq]</p>
Other Designations	-