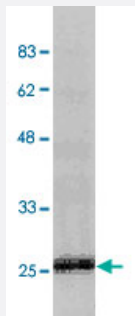


CRADD polyclonal antibody

Catalog # PAB13793

Size 50 ug

Applications



Western Blot (Cell lysate)

Detection of endogenous CRADD (human) in HEK293T cells by CRADD polyclonal antibody (Cat # PAB13793) at 1 : 1000 dilution. Total cell extracts (50 ug) were run on a SDS-gel followed by incubation with HRP-coupled anti-rabbit secondary antibody.

Specification

Product Description	Rabbit polyclonal antibody raised against full length recombinant CRADD.
Immunogen	Recombinant N-terminus tag fusion protein corresponding to full length human CRADD.
Host	Rabbit
Reactivity	Human
Specificity	Recognizes RAIDD.
Form	Liquid
Recommend Usage	Western Blot (1:1000) The optimal working dilution should be determined by the end user.
Storage Buffer	In buffer containing 0.02% sodium azide
Storage Instruction	Store at 4°C. For long term storage store at -20°C. Aliquot to avoid repeated freezing and thawing.
Note	This product contains sodium azide: a POISONOUS AND HAZARDOUS SUBSTANCE which should be handled by trained staff only.

Applications

- Western Blot (Cell lysate)

Detection of endogenous CRADD (human) in HEK293T cells by CRADD polyclonal antibody (Cat # PAB13793) at 1 : 1000 dilution. Total cell extracts (50 ug) were run on a SDS-gel followed by incubation with HRP-coupled anti-rabbit secondary antibody.

- Immunoprecipitation

Gene Info — CRADD

Entrez GeneID [8738](#)

Gene Name CRADD

Gene Alias MGC9163, RAIDD

Gene Description CASP2 and RIPK1 domain containing adaptor with death domain

Omim ID [603454](#)

Gene Ontology [Hyperlink](#)

Gene Summary The protein encoded by this gene is a death domain (CARD/DD)-containing protein and has been shown to induce cell apoptosis. Through its CARD domain, this protein interacts with, and thus recruits, caspase 2/ICH1 to the cell death signal transduction complex that includes tumor necrosis factor receptor 1 (TNFR1A), RIPK1/RIP kinase, and numbers of other CARD domain-containing proteins. [provided by RefSeq]

Other Designations RIP-associated ICH1/CED3-homologous protein with death domain|RIP-associated protein with a death domain|caspase and RIP adaptor with death domain|death adaptor molecule RAIDD|death domain containing protein CRADD

Disease

- [Diabetes Mellitus](#)
- [Genetic Predisposition to Disease](#)
- [Narcolepsy](#)