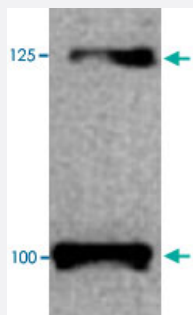


# Lepr polyclonal antibody

Catalog # PAB13709      Size 100 uL

## Applications



### Western Blot (Tissue lysate)

Western blot of both short and long forms of Lepr on mouse lung tissue extract using Lepr polyclonal antibody (Cat # PAB13709).

## Specification

<b>Product Description</b>	Rabbit polyclonal antibody raised against synthetic peptide of Lepr.
<b>Immunogen</b>	A synthetic peptide corresponding to amino acids 577-594 of rat Lepr.
<b>Sequence</b>	KEIQWKTHEVFDAKSKSA
<b>Host</b>	Rabbit
<b>Reactivity</b>	Human, Mouse, Rat
<b>Specificity</b>	Recognizes leptin receptor. Detects bands of 100 KDa and 125 KDa, representing the short and long forms of leptin receptor. Also detects two unrelated bands of 31 KDa and 35 KDa.
<b>Form</b>	Liquid
<b>Recommend Usage</b>	Western Blot (1:2000) The optimal working dilution should be determined by the end user.
<b>Storage Buffer</b>	In PBS (0.05% sodium azide)
<b>Storage Instruction</b>	Store at -20°C. Aliquot to avoid repeated freezing and thawing.

**Note**

This product contains sodium azide: a POISONOUS AND HAZARDOUS SUBSTANCE which should be handled by trained staff only.

## Applications

- Western Blot (Tissue lysate)

Western blot of both short and long forms of Lepr on mouse lung tissue extract using Lepr polyclonal antibody (Cat # PAB13709).

## Gene Info — Lepr

Entrez GeneID	<a href="#">24536</a>
---------------	-----------------------

Gene Name	Lepr
-----------	------

Gene Alias	Fa
------------	----

Gene Description	leptin receptor
------------------	-----------------

Gene Ontology	<a href="#">Hyperlink</a>
---------------	---------------------------

Other Designations	Leptin receptor (fatty)
--------------------	-------------------------