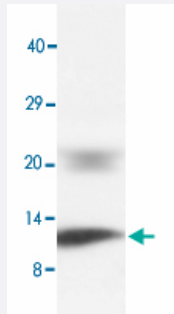


# PLN polyclonal antibody

Catalog # PAB13686      Size 100 ug

## Applications



### Western Blot (Tissue lysate)

Western blot of rat heart tissue lysate with PLN polyclonal antibody (Cat # PAB13686).

## Specification

<b>Product Description</b>	Rabbit polyclonal antibody raised against synthetic peptide of PLN.
<b>Immunogen</b>	A synthetic peptide corresponding to amino acids at N-terminus of human PLN.
<b>Host</b>	Rabbit
<b>Theoretical MW (kDa)</b>	6.1
<b>Reactivity</b>	Human, Mouse, Rat
<b>Specificity</b>	Identical to the related rat and mouse sequence.
<b>Form</b>	Lyophilized
<b>Purification</b>	Affinity purification
<b>Isotype</b>	IgG
<b>Recommend Usage</b>	Western Blot (1 ug/mL) The optimal working dilution should be determined by the end user.
<b>Storage Buffer</b>	Lyophilized from 0.9 mg NaCl, 0.2 mg Na <sub>2</sub> HPO <sub>4</sub> (5 mg BSA, 0.05 mg sodium azide, 0.05 mg Thimerosal)

**Storage Instruction**

Store at -20°C on dry atmosphere.

After reconstitution with 200 uL of deionized water and concentration will be 500 ug/mL, store at -20°C or lower.

Aliquot to avoid repeated freezing and thawing.

**Note**

This product contains sodium azide and thimerosal: POISONOUS AND HAZARDOUS SUBSTANCE which should be handled by trained staff only.

## Applications

- Western Blot (Tissue lysate)

Western blot of rat heart tissue lysate with PLN polyclonal antibody (Cat # PAB13686).

## Gene Info — PLN

**Entrez GeneID** [5350](#)

**Gene Name** PLN

**Gene Alias** CMD1P, PLB

**Gene Description** phospholamban

**Omim ID** [172405 609909](#)

**Gene Ontology** [Hyperlink](#)

**Gene Summary**

The protein encoded by this gene is found as a pentamer and is a major substrate for the cAMP-dependent protein kinase in cardiac muscle. The encoded protein is an inhibitor of cardiac muscle sarcoplasmic reticulum Ca(2+)-ATPase in the unphosphorylated state, but inhibition is relieved upon phosphorylation of the protein. The subsequent activation of the Ca(2+) pump leads to enhanced muscle relaxation rates, thereby contributing to the inotropic response elicited in heart by beta-agonists. The encoded protein is a key regulator of cardiac diastolic function. Mutations in this gene are a cause of inherited human dilated cardiomyopathy with refractory congestive heart failure. [provided by RefSeq]

**Other Designations** OTTHUMP00000017092|cardiac phospholamban

## Publication Reference

- [The human phospholamban gene: structure and expression.](#)

McTiernan CF, Frye CS, Lemster BH, Kinder EA, Ogletree-Hughes ML, Moravec CS, Feldman AM.

Journal of Molecular and Cellular Cardiology 1999 Mar; 31(3):679.

Application: WB-Ti, Human, Human hearts

## Pathway

- [Calcium signaling pathway](#)

## Disease

- [Arrhythmias](#)
- [Asthma](#)
- [Cardiomyopathy](#)
- [Cardiovascular Diseases](#)
- [Death](#)
- [Disease Progression](#)
- [Genetic Predisposition to Disease](#)
- [Long QT syndrome](#)
- [Ventricular Dysfunction](#)