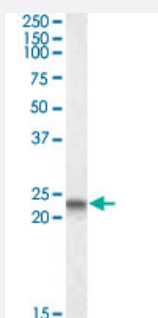


CAV3 polyclonal antibody

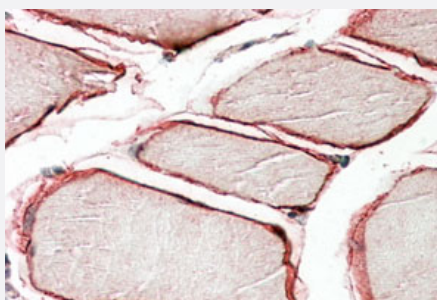
Catalog # PAB13676 Size 100 ug

Applications



Western Blot (Tissue lysate)

CAV3 polyclonal antibody (Cat # PAB13676) (0.3 ug/mL) staining of human heart lysate (35 ug protein in RIPA buffer). Primary incubation was 1 hour. Detected by chemiluminescence.



Immunohistochemistry (Formalin/PFA-fixed paraffin-embedded sections)

CAV3 polyclonal antibody (Cat # PAB13676) (3.8 ug/mL) staining of paraffin embedded human skeletal muscle. Steamed antigen retrieval with citrate buffer pH 6, AP-staining.

Specification

Product Description	Goat polyclonal antibody raised against synthetic peptide of CAV3.
Immunogen	A synthetic peptide corresponding to N-terminus of human CAV3.
Sequence	EHTDLEAQVKDIH-C
Host	Goat
Theoretical MW (kDa)	17.3
Reactivity	Human, Mouse, Rat
Specificity	Reported variants represent identical protein (NP_001225.1; NP_203123.1).

Form	Liquid
Purification	Antigen affinity purification
Concentration	0.5 mg/mL
Recommend Usage	ELISA (1:4000) Western Blot (0.3-1 ug/mL) Immunohistochemistry (Formalin/PFA-fixed paraffin-embedded sections) (3-5 ug/mL) The optimal working dilution should be determined by the end user.
Storage Buffer	In 0.5 mg/mL Tris saline, pH 7.3 (0.02% sodium azide, 0.5% BSA)
Storage Instruction	Store at -20°C. Aliquot to avoid repeated freezing and thawing.
Note	This product contains sodium azide: a POISONOUS AND HAZARDOUS SUBSTANCE which should be handled by trained staff only.

Applications

- Western Blot (Tissue lysate)

CAV3 polyclonal antibody (Cat # PAB13676) (0.3 ug/mL) staining of human heart lysate (35 ug protein in RIPA buffer). Primary incubation was 1 hour. Detected by chemiluminescence.

- Immunohistochemistry (Formalin/PFA-fixed paraffin-embedded sections)

CAV3 polyclonal antibody (Cat # PAB13676) (3.8 ug/mL) staining of paraffin embedded human skeletal muscle. Steamed antigen retrieval with citrate buffer pH 6, AP-staining.

- Enzyme-linked Immunoabsorbent Assay

Gene Info — CAV3

Entrez GeneID	859
Protein Accession#	NP_203123.1
Gene Name	CAV3
Gene Alias	LGMD1C, LQT9, MGC126100, MGC126101, MGC126129, VIP-21, VIP21
Gene Description	caveolin 3
Omim ID	123320 192600 601253 606072 607801

Gene Ontology

[Hyperlink](#)

Gene Summary

This gene encodes a caveolin family member, which functions as a component of the caveolae plasma membranes found in most cell types. Caveolin proteins are proposed to be scaffolding proteins for organizing and concentrating certain caveolin-interacting molecules. Mutations identified in this gene lead to interference with protein oligomerization or intra-cellular routing, disrupting caveolae formation and resulting in Limb-Girdle muscular dystrophy type-1C (LGMD-1C), hyperCKemia or rippling muscle disease (RMD). Alternative splicing has been identified for this locus, with inclusion or exclusion of a differentially spliced intron. In addition, transcripts utilize multiple polyA sites and contain two potential translation initiation sites. [provided by RefSeq]

Other Designations

M-caveolin

Publication Reference

- [Mechanistic insights into \$\delta\$ -opioid-induced cardioprotection: Involvement of caveolin translocation to the mitochondria.](#)

Wang JW, Xue ZY, Wu AS.

Life Sciences 2019 Nov; 247:116942.

Application: WB, Mouse, Mouse ventricle-purified mitochondria

- [Caveolin-3 is a sensitive and specific marker for rhabdomyosarcoma.](#)

Fine SW, Lisanti MP, Argani P, Li M.

Applied Immunohistochemistry & Molecular Morphology 2005 Sep; 13(3):231.

Application: IHC-P, Human, Cardiac myocytes, Skeletal muscle

Pathway

- [Focal adhesion](#)

Disease

- [Arrhythmia](#)
- [Cardiovascular Diseases](#)
- [Diabetes Mellitus](#)
- [Edema](#)
- [Liver Cirrhosis](#)

- [Long QT syndrome](#)
- [Sudden Infant Death](#)