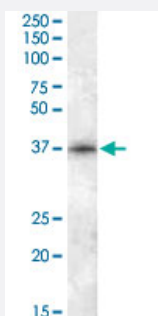


CDK10 polyclonal antibody

Catalog # PAB13668

Size 100 ug

Applications



Western Blot (Cell lysate)

CDK10 polyclonal antibody (Cat # PAB13668) (0.5 ug/mL) staining of HepG2 lysate (35 ug protein in RIPA buffer). Primary incubation was 1 hour. Detected by chemiluminescence.

Specification

Product Description	Goat polyclonal antibody raised against synthetic peptide of CDK10.
Immunogen	A synthetic peptide corresponding to human CDK10.
Sequence	AEPDLECEQIRLK
Host	Goat
Theoretical MW (kDa)	41
Reactivity	Human
Specificity	Approximately 37 KDa band observed in human lung lysates and in lysates of cell lines HEK293, A-549 and HepG2 (calculated MW of 41.0 KDa according to NP_443714.3).
Form	Liquid
Purification	Antigen affinity purification
Concentration	0.5 mg/mL

Recommend Usage	ELISA (1:64000) Western Blot (0.5-2 ug/mL) The optimal working dilution should be determined by the end user.
Storage Buffer	In Tris saline, pH 7.3 (0.5% BSA, 0.02% sodium azide)
Storage Instruction	Store at -20°C. Aliquot to avoid repeated freezing and thawing.
Note	This product contains sodium azide: a POISONOUS AND HAZARDOUS SUBSTANCE which should be handled by trained staff only.

Applications

- Western Blot (Cell lysate)

CDK10 polyclonal antibody (Cat # PAB13668) (0.5 ug/mL) staining of HepG2 lysate (35 ug protein in RIPA buffer). Primary incubation was 1 hour. Detected by chemiluminescence.

- Enzyme-linked Immunoabsorbent Assay

Gene Info — CDK10

Entrez GeneID	8558
Protein Accession#	NP_443714.3
Gene Name	CDK10
Gene Alias	PISSLRE
Gene Description	cyclin-dependent kinase 10
Omim ID	603464
Gene Ontology	Hyperlink
Gene Summary	The protein encoded by this gene belongs to the CDK subfamily of the Ser/Thr protein kinase family. The CDK subfamily members are highly similar to the gene products of <i>S. cerevisiae</i> cdc28, and <i>S. pombe</i> cdc2, and are known to be essential for cell cycle progression. This kinase has been shown to play a role in cellular proliferation and its function is limited to cell cycle G2-M phase. Multiple transcript variants encoding different isoforms have been found for this gene. [provided by RefSeq]
Other Designations	CDC2-related protein kinase cell division protein kinase 10 cyclin-dependent kinase (CDC2-like) 10 cyclin-dependent kinase related protein serine/threonine protein kinase PISSLRE

Publication Reference

- [Identification of CDK10 as an important determinant of resistance to endocrine therapy for breast cancer.](#)

lorns E, Turner NC, Elliott R, Syed N, Garrone O, Gasco M, Tutt AN, Crook T, Lord CJ, Ashworth A.

Cancer Cell 2008 Feb; 13(2):91.

Application: WB-Tr, Human, MCF-7 cells