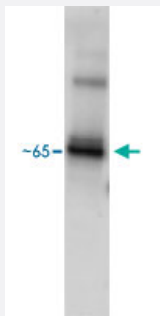


ESR1/ESR2 polyclonal antibody

Catalog # PAB13578

Size 100 ug

Applications



Western Blot (Recombinant protein)

Human recombinant ESR1/ESR2 at approximately 40 ng. ESR1/ESR2 polyclonal antibody (Cat # PAB13578) have been used at 1 : 2,000 dilution.

Specification

Product Description	Rabbit polyclonal antibody raised against synthetic peptide of ESR1/ESR2.
Immunogen	A synthetic peptide (conjugated with KLH) corresponding to human ESR1/ESR2.
Host	Rabbit
Reactivity	Human
Form	Lyophilized
Recommend Usage	Western Blot (1:5000) The optimal working dilution should be determined by the end user.
Storage Buffer	Lyophilized from PBS, pH 7.4
Storage Instruction	Store at -20°C on dry atmosphere. After reconstitution with 100 uL deionized water, store at -20°C or lower. Aliquot to avoid repeated freezing and thawing.

Applications

- Western Blot (Recombinant protein)

Human recombinant ESR1/ESR2 at approximately 40 ng. ESR1/ESR2 polyclonal antibody (Cat # PAB13578) have been used at 1 : 2,000 dilution.