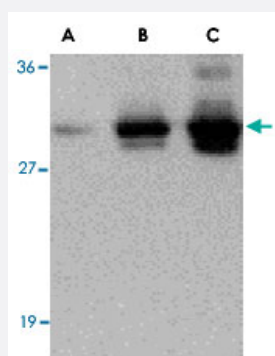


C1QTNF7 polyclonal antibody

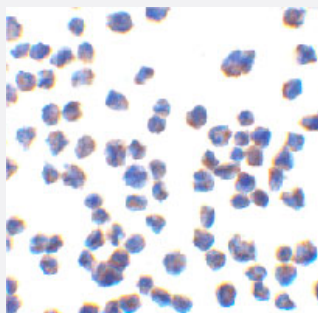
Catalog # PAB13428 Size 100 ug

Applications



Western Blot (Recombinant protein)

Western blot of recombinant C1QTNF7 : (A) 5 ng, (B) 25 ng, and (C) 50 ng with C1QTNF7 polyclonal antibody (Cat # PAB13428) at 1 ug/mL .



Immunocytochemistry

Immunocytochemistry of C1QTNF7 in 293 cells with C1QTNF7 polyclonal antibody (Cat # PAB13428) at 10 ug/mL .

Specification

Product Description	Rabbit polyclonal antibody raised against synthetic peptide of C1QTNF7.
Immunogen	Recombinant protein corresponding to human C1QTNF7.
Host	Rabbit
Reactivity	Human, Mouse, Rat
Form	Liquid
Recommend Usage	Western Blot (0.5 ug/mL) The optimal working dilution should be determined by the end user.

Storage Buffer	In PBS (0.02% sodium azide)
Storage Instruction	Store at 4°C for three months. For long term storage store at -20°C. Aliquot to avoid repeated freezing and thawing.
Note	This product contains sodium azide: a POISONOUS AND HAZARDOUS SUBSTANCE which should be handled by trained staff only.

Applications

- Western Blot (Recombinant protein)

Western blot of recombinant C1QTNF7 : (A) 5 ng, (B) 25 ng, and (C) 50 ng with C1QTNF7 polyclonal antibody (Cat # PAB13428) at 1 ug/mL .

- Immunocytochemistry

Immunocytochemistry of C1QTNF7 in 293 cells with C1QTNF7 polyclonal antibody (Cat # PAB13428) at 10 ug/mL .

Gene Info — C1QTNF7

Entrez GeneID	114905
Protein Accession#	AAI21932
Gene Name	C1QTNF7
Gene Alias	CTRP7, ZACRP7
Gene Description	C1q and tumor necrosis factor related protein 7
Gene Ontology	Hyperlink
Other Designations	OTTHUMP00000122629 OTTHUMP00000159165 complement-c1q tumor necrosis factor-related protein 7

Publication Reference

- [ACRP30, a new hormone controlling fat and glucose metabolism.](#)

Tsao TS, Lodish HF, Fruebis J.

European Journal of Pharmacology 2002 Apr; 440(2-3):213.

- [Human lactoferrin interacts with soluble CD14 and inhibits expression of endothelial adhesion molecules, E-selectin and ICAM-1, induced by the CD14-lipopolysaccharide complex.](#)

Baveye S, Elaiss E, Fernig DG, Blanquart C, Mazurier J, Legrand D.

Infection and Immunity 2000 Dec; 68(12):6519.

- [The crystal structure of a complement-1q family protein suggests an evolutionary link to tumor necrosis factor.](#)

Shapiro L, Scherer PE.

Current Biology: CB 1998 Mar; 8(6):335.

Disease

- [Genetic Predisposition to Disease](#)
- [Kidney Failure](#)
- [Lymphoma](#)