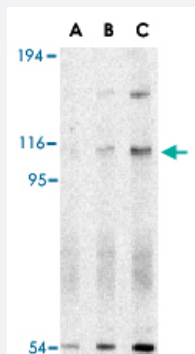


ERN1 polyclonal antibody

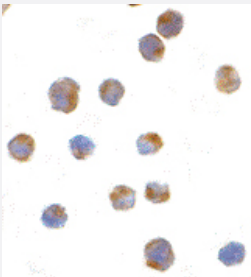
Catalog # PAB13425 Size 100 ug

Applications



Western Blot (Cell lysate)

Western blot analysis of ERN1 in A-20 cell lysate with ERN1 polyclonal antibody (Cat # PAB13425) at (A) 0.5, (B) 1 and (C) 2 ug/mL .



Immunocytochemistry

Immunocytochemistry of ERN1 in A-20 cells with ERN1 polyclonal antibody (Cat # PAB13425) at 1 ug/mL .

Specification

Product Description	Rabbit polyclonal antibody raised against synthetic peptide of ERN1.
Immunogen	A synthetic peptide corresponding to N-terminus 15 amino acids of human ERN1.
Host	Rabbit
Reactivity	Human, Mouse, Rat
Form	Liquid
Recommend Usage	Western Blot (1-2 ug/mL) The optimal working dilution should be determined by the end user.

Storage Buffer	In PBS (0.02% sodium azide)
Storage Instruction	Store at 4°C for three months. For long term storage store at -20°C. Aliquot to avoid repeated freezing and thawing.
Note	This product contains sodium azide: a POISONOUS AND HAZARDOUS SUBSTANCE which should be handled by trained staff only.

Applications

- Western Blot (Cell lysate)

Western blot analysis of ERN1 in A-20 cell lysate with ERN1 polyclonal antibody (Cat # PAB13425) at (A) 0.5, (B) 1 and (C) 2 ug/mL .

- Immunocytochemistry

Immunocytochemistry of ERN1 in A-20 cells with ERN1 polyclonal antibody (Cat # PAB13425) at 1 ug/mL .

Gene Info — ERN1

Entrez GeneID	2081
Protein Accession#	Q75460
Gene Name	ERN1
Gene Alias	FLJ30999, IRE1, IRE1P, MGC163277, MGC163279
Gene Description	endoplasmic reticulum to nucleus signaling 1
Omim ID	604033
Gene Ontology	Hyperlink
Gene Summary	The protein encoded by this gene is the ER to nucleus signalling 1 protein, a human homologue of the yeast Ire1 gene product. This protein possesses intrinsic kinase activity and an endoribonuclease activity and it is important in altering gene expression as a response to endoplasmic reticulum-based stress signals. [provided by RefSeq]
Other Designations	ER to nucleus signalling 1 endoplasmic reticulum to nucleus signalling 1 inositol-requiring 1 protein kinase/endoribonuclease

Publication Reference

- [The ER chaperone and signaling regulator GRP78/BiP as a monitor of endoplasmic reticulum stress.](#)

Lee AS.

Methods 2005 Apr; 35(4):373.

- [Dynamic interaction of BiP and ER stress transducers in the unfolded-protein response.](#)

Bertolotti A, Zhang Y, Hendershot LM, Harding HP, Ron D.

Nature Cell Biology 2000 Jun; 2(6):326.

Application: WB-Ce, Mouse, AR42J cells, Gastric mucosa

- [The glucose-regulated proteins \(GRP78 and GRP94\): functions, gene regulation, and applications.](#)

Little E, Ramakrishnan M, Roy B, Gazit G, Lee AS.

Crit Rev Eukaryot Gene Expr 1994 Jan; 4(1):1.

Disease

- [Cardiovascular Diseases](#)
- [Diabetes Mellitus](#)
- [Edema](#)
- [Head and Neck Neoplasms](#)
- [Kidney Failure](#)
- [Neoplasm Recurrence](#)
- [Neoplasms](#)
- [Tobacco Use Disorder](#)