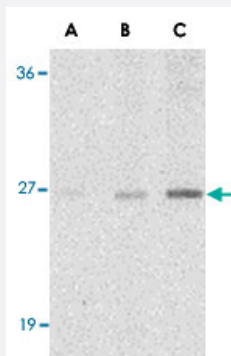


# C1QTNF7 polyclonal antibody

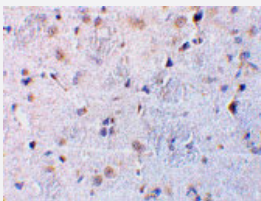
Catalog # PAB13423      Size 100 ug

## Applications



### Western Blot (Cell lysate)

Western blot analysis of C1QTNF7 in NIH/3T3 cell lysate with C1QTNF7 polyclonal antibody (Cat # PAB13423) at (A) 1, (B) 2, and (C) 4 ug/mL .



### Immunohistochemistry (Formalin/PFA-fixed paraffin-embedded sections)

Immunohistochemical staining of rat brain tissue using C1QTNF7 polyclonal antibody (Cat # PAB13423) at 10 ug/mL .

## Specification

<b>Product Description</b>	Rabbit polyclonal antibody raised against synthetic peptide of C1QTNF7.
<b>Immunogen</b>	A synthetic peptide corresponding to N-terminus 15 amino acids of human C1QTNF7.
<b>Host</b>	Rabbit
<b>Reactivity</b>	Human, Mouse, Rat
<b>Specificity</b>	CTRP7 antibody is human, mouse, and rat reactive.
<b>Form</b>	Liquid

<b>Recommend Usage</b>	Western Blot (0.5 ug/mL) The optimal working dilution should be determined by the end user.
<b>Storage Buffer</b>	In PBS (0.02% sodium azide)
<b>Storage Instruction</b>	Store at 4°C for three months. For long term storage store at -20°C. Aliquot to avoid repeated freezing and thawing.
<b>Note</b>	This product contains sodium azide: a POISONOUS AND HAZARDOUS SUBSTANCE which should be handled by trained staff only.

## Applications

- Western Blot (Cell lysate)

Western blot analysis of C1QTNF7 in NIH/3T3 cell lysate with C1QTNF7 polyclonal antibody (Cat # PAB13423) at (A) 1, (B) 2, and (C) 4 ug/mL .

- Immunohistochemistry (Formalin/PFA-fixed paraffin-embedded sections)

Immunohistochemical staining of rat brain tissue using C1QTNF7 polyclonal antibody (Cat # PAB13423) at 10 ug/mL .

- Immunocytochemistry

## Gene Info — C1QTNF7

<b>Entrez GeneID</b>	<a href="#">114905</a>
<b>Protein Accession#</b>	<a href="#">AAH24015</a>
<b>Gene Name</b>	C1QTNF7
<b>Gene Alias</b>	CTRP7, ZACRP7
<b>Gene Description</b>	C1q and tumor necrosis factor related protein 7
<b>Gene Ontology</b>	<a href="#">Hyperlink</a>
<b>Other Designations</b>	OTTHUMP00000122629 OTTHUMP00000159165 complement-c1q tumor necrosis factor-related protein 7

## Publication Reference

- [ACRP30, a new hormone controlling fat and glucose metabolism.](#)

Tsao TS, Lodish HF, Fruebis J.

European Journal of Pharmacology 2002 Apr; 440(2-3):213.

- [Human lactoferrin interacts with soluble CD14 and inhibits expression of endothelial adhesion molecules, E-selectin and ICAM-1, induced by the CD14-lipopolysaccharide complex.](#)

Baveye S, Elaiss E, Fernig DG, Blanquart C, Mazurier J, Legrand D.

Infection and Immunity 2000 Dec; 68(12):6519.

- [The crystal structure of a complement-1q family protein suggests an evolutionary link to tumor necrosis factor.](#)

Shapiro L, Scherer PE.

Current Biology: CB 1998 Mar; 8(6):335.

## Disease

- [Genetic Predisposition to Disease](#)
- [Kidney Failure](#)
- [Lymphoma](#)