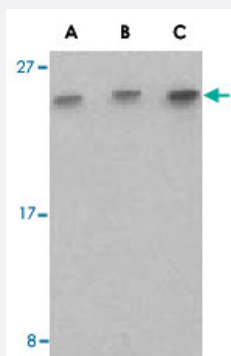


C1QTNF7 polyclonal antibody

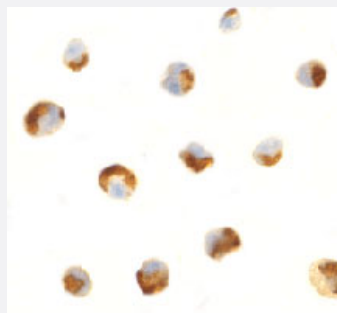
Catalog # PAB13422 Size 100 ug

Applications



Western Blot (Cell lysate)

Western blot analysis of C1QTNF7 in 293 cell lysate with C1QTNF7 polyclonal antibody (Cat # PAB13422) at (A) 0.5, (B) 1, and (C) 2 ug/mL .



Immunocytochemistry

Immunocytochemistry of C1QTNF7 in HL-60 cells with C1QTNF7 polyclonal antibody (Cat # PAB13422) at 0.5 ug/mL .

Specification

Product Description	Rabbit polyclonal antibody raised against synthetic peptide of C1QTNF7.
Immunogen	A synthetic peptide corresponding to C-terminus 15 amino acids of human C1QTNF7.
Host	Rabbit
Reactivity	Human, Mouse, Rat
Specificity	Anti-CTRP7 is human, mouse, and rat reactive.
Form	Liquid

Recommend Usage	Western Blot (0.5 ug/mL) The optimal working dilution should be determined by the end user.
Storage Buffer	In PBS (0.02% sodium azide)
Storage Instruction	Store at 4°C for three months. For long term storage store at -20°C. Aliquot to avoid repeated freezing and thawing.
Note	This product contains sodium azide: a POISONOUS AND HAZARDOUS SUBSTANCE which should be handled by trained staff only.

Applications

- Western Blot (Cell lysate)

Western blot analysis of C1QTNF7 in 293 cell lysate with C1QTNF7 polyclonal antibody (Cat # PAB13422) at (A) 0.5, (B) 1, and (C) 2 ug/mL .

- Immunocytochemistry

Immunocytochemistry of C1QTNF7 in HL-60 cells with C1QTNF7 polyclonal antibody (Cat # PAB13422) at 0.5 ug/mL .

Gene Info — C1QTNF7

Entrez GeneID	114905
Protein Accession#	AAH24015
Gene Name	C1QTNF7
Gene Alias	CTRP7, ZACRP7
Gene Description	C1q and tumor necrosis factor related protein 7
Gene Ontology	Hyperlink
Other Designations	OTTHUMP00000122629 OTTHUMP00000159165 complement-c1q tumor necrosis factor-related protein 7

Publication Reference

- [Low-dose exercise protects the heart against established myocardial infarction via IGF-1-upregulated CTRP9 in male mice.](#)

Yanzhen Tan, Pan Feng, Lele Feng, Lei Shi, Yujie Song, Jian Yang, Weixun Duan, Erhe Gao, Jincheng Liu, Dinghua Yi, Bing Zhang, Yang Sun, Wei Yi.

MedComm 2023 Nov; 4(6):e411.

Application: WB, Mouse, Mouse heart tissues, myocardial tissues

- [ACRP30, a new hormone controlling fat and glucose metabolism.](#)

Tsao TS, Lodish HF, Fruebis J.

European Journal of Pharmacology 2002 Apr; 440(2-3):213.

- [Human lactoferrin interacts with soluble CD14 and inhibits expression of endothelial adhesion molecules, E-selectin and ICAM-1, induced by the CD14-lipopolysaccharide complex.](#)

Baveye S, Ellass E, Fernig DG, Blanquart C, Mazurier J, Legrand D.

Infection and Immunity 2000 Dec; 68(12):6519.

Disease

- [Genetic Predisposition to Disease](#)
- [Kidney Failure](#)
- [Lymphoma](#)