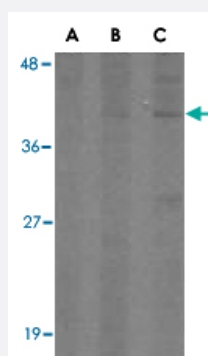


# C1QTNF2 polyclonal antibody

Catalog # PAB13420

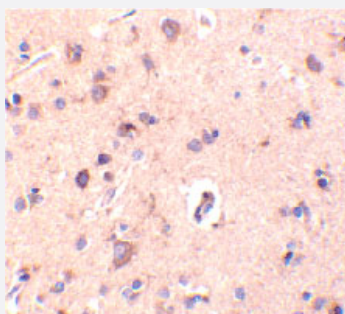
Size 100 ug

## Applications



### Western Blot (Cell lysate)

Western blot analysis of C1QTNF2 in NIH/3T3 (Balb) cell lysate with C1QTNF2 polyclonal antibody (Cat # PAB13420) at (A) 1, (B) 2, and (C) 4 ug/mL .



### Immunohistochemistry (Formalin/PFA-fixed paraffin-embedded sections)

Immunohistochemical staining of human brain tissue using C1QTNF2 polyclonal antibody (Cat # PAB13420) at 10 ug/mL .

## Specification

<b>Product Description</b>	Rabbit polyclonal antibody raised against synthetic peptide of C1QTNF2.
<b>Immunogen</b>	A synthetic peptide corresponding to internal region 16 amino acids of human C1QTNF2.
<b>Host</b>	Rabbit
<b>Reactivity</b>	Human, Mouse
<b>Form</b>	Liquid
<b>Recommend Usage</b>	Western Blot (2-4 ug/mL) The optimal working dilution should be determined by the end user.

<b>Storage Buffer</b>	In PBS (0.02% sodium azide)
<b>Storage Instruction</b>	Store at 4°C for three months. For long term storage store at -20°C. Aliquot to avoid repeated freezing and thawing.
<b>Note</b>	This product contains sodium azide: a POISONOUS AND HAZARDOUS SUBSTANCE which should be handled by trained staff only.

## Applications

- Western Blot (Cell lysate)

Western blot analysis of C1QTNF2 in NIH/3T3 (Balb) cell lysate with C1QTNF2 polyclonal antibody (Cat # PAB13420) at (A) 1, (B) 2, and (C) 4 ug/mL .

- Immunohistochemistry (Formalin/PFA-fixed paraffin-embedded sections)

Immunohistochemical staining of human brain tissue using C1QTNF2 polyclonal antibody (Cat # PAB13420) at 10 ug/mL .

## Gene Info — C1QTNF2

<b>Entrez GeneID</b>	<a href="#">114898</a>
<b>Protein Accession#</b>	<a href="#">NP_114114</a>
<b>Gene Name</b>	C1QTNF2
<b>Gene Alias</b>	CTRP2, zacrp2
<b>Gene Description</b>	C1q and tumor necrosis factor related protein 2
<b>Gene Ontology</b>	<a href="#">Hyperlink</a>
<b>Other Designations</b>	complement-c1q tumor necrosis factor-related protein 2

## Publication Reference

- [ACRP30, a new hormone controlling fat and glucose metabolism.](#)

Tsao TS, Lodish HF, Fruebis J.

European Journal of Pharmacology 2002 Apr; 440(2-3):213.

- [Human lactoferrin interacts with soluble CD14 and inhibits expression of endothelial adhesion molecules, E-selectin and ICAM-1, induced by the CD14-lipopolysaccharide complex.](#)

Baveye S, Elaiss E, Fernig DG, Blanquart C, Mazurier J, Legrand D.

Infection and Immunity 2000 Dec; 68(12):6519.