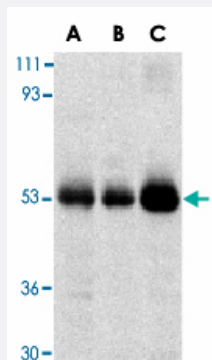


TRIM5-alpha polyclonal antibody

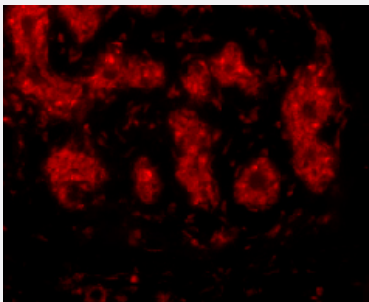
Catalog # PAB13409 Size 100 ug

Applications



Western Blot

Western blot analysis of TRIM5 expression in human stomach (A), thymus (B), and uterus (C) cell lysate with TRIM5 alpha polyclonal antibody (Cat # PAB13409) at 2 ug /mL .



Immunofluorescence

Immunofluorescence of TRIM5 alpha in human breast tissue with TRIM5 alpha polyclonal antibody (Cat # PAB13409) at 10 ug/mL .

Specification

Product Description	Rabbit polyclonal antibody raised against synthetic peptide of TRIM5.
Immunogen	A synthetic peptide corresponding to C-terminus of monkey TRIM5.
Host	Rabbit
Reactivity	Human, Monkey
Specificity	A band at approximately 55 KDa can be detected. Anti-TRIM5 alpha is human specific but should presumably also react with rhesus protein.
Form	Liquid

Recommend Usage	Western Blot (1-2 ug/mL) The optimal working dilution should be determined by the end user.
Storage Buffer	In PBS (0.02% sodium azide)
Storage Instruction	Store at 4°C for three months. For long term storage store at -20°C. Aliquot to avoid repeated freezing and thawing.
Note	This product contains sodium azide: a POISONOUS AND HAZARDOUS SUBSTANCE which should be handled by trained staff only.

Applications

- Western Blot

Western blot analysis of TRIM5 expression in human stomach (A), thymus (B), and uterus (C) cell lysate with TRIM5 alpha polyclonal antibody (Cat # PAB13409) at 2 ug /mL .

- Immunofluorescence

Immunofluorescence of TRIM5 alpha in human breast tissue with TRIM5 alpha polyclonal antibody (Cat # PAB13409) at 10 ug/mL .

Gene Info — TRIM5

Entrez GeneID	574288
Protein Accession#	NP_149023 (Human)
Gene Name	TRIM5
Gene Alias	-
Gene Description	tripartite motif-containing 5
Gene Ontology	Hyperlink
Other Designations	-

Publication Reference

- [Retrovirus resistance factors Ref1 and Lv1 are species-specific variants of TRIM5alpha.](#)

Hatzioannou T, Perez-Caballero D, Yang A, Cowan S, Bieniasz PD.

PNAS 2004 Jul; 101(29):10774.

- [The cytoplasmic body component TRIM5alpha restricts HIV-1 infection in Old World monkeys.](#)

Stremlau M, Owens CM, Perron MJ, Kiessling M, Autissier P, Sodroski J.

Nature 2004 Feb; 427(6977):848.

- [The tripartite motif family identifies cell compartments.](#)

Reymond A, Meroni G, Fantozzi A, Merla G, Cairo S, Luzi L, Riganelli D, Zanaria E, Messali S, Cainarca S, Guffanti A, Minucci S, Pelicci PG, Ballabio A.

The EMBO Journal 2001 May; 20(9):2140.