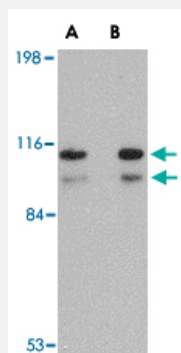


SATB1 polyclonal antibody

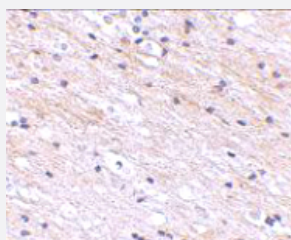
Catalog # PAB13389 Size 100 ug

Applications



Western Blot (Cell lysate)

Western blot analysis of SATB1 in SK-N-SH cell lysate with SATB1 polyclonal antibody (Cat # PAB13389) at (A) 1 and (B) 2 ug/mL .



Immunohistochemistry

Immunohistochemical staining of human brain tissue with 2.5 ug/mL SATB1 polyclonal antibody (Cat # PAB13389).

Specification

Product Description	Rabbit polyclonal antibody raised against synthetic peptide of SATB1.
Immunogen	A synthetic peptide corresponding to N-terminus 18 amino acids of human SATB1.
Host	Rabbit
Reactivity	Human, Mouse, Rat
Form	Liquid
Recommend Usage	Western Blot (1-2 ug/mL) The optimal working dilution should be determined by the end user.

Storage Buffer	In PBS (0.02% sodium azide)
Storage Instruction	Store at 4°C for three months. For long term storage store at -20°C. Aliquot to avoid repeated freezing and thawing.
Note	This product contains sodium azide: a POISONOUS AND HAZARDOUS SUBSTANCE which should be handled by trained staff only.

Applications

- Western Blot (Cell lysate)

Western blot analysis of SATB1 in SK-N-SH cell lysate with SATB1 polyclonal antibody (Cat # PAB13389) at (A) 1 and (B) 2 ug/mL .

- Immunohistochemistry

Immunohistochemical staining of human brain tissue with 2.5 ug/mL SATB1 polyclonal antibody (Cat # PAB13389).

Gene Info — SATB1

Entrez GeneID	6304
Protein Accession#	Q01826
Gene Name	SATB1
Gene Alias	-
Gene Description	SATB homeobox 1
Omim ID	602075
Gene Ontology	Hyperlink
Other Designations	DNA-binding protein SATB1 special AT-rich sequence binding protein 1 special AT-rich sequence binding protein 1 (binds to nuclear matrix/scaffold-associating DNA's)

Publication Reference

- [PDZ domain-mediated dimerization and homeodomain-directed specificity are required for high-affinity DNA binding by SATB1.](#)

Purbey PK, Singh S, Kumar PP, Mehta S, Ganesh KN, Mitra D, Galande S.

Nucleic Acids Research 2008 Apr; 36(7):2107.

- [Tissue-specific nuclear architecture and gene expression regulated by SATB1.](#)

Cai S, Han HJ, Kohwi-Shigematsu T.

Nature Genetics 2003 May; 34(1):42.

Application: ChIP, IF, Mouse, Mouse thymocytes

- [Nucleolin is a matrix attachment region DNA-binding protein that specifically recognizes a region with high base-unpairing potential.](#)

Dickinson LA, Kohwi-Shigematsu T.

Molecular and Cellular Biology 1995 Jan; 15(1):456.

Application: Func, WB, Human, Mouse, K-562 cells, Mouse thymus

Disease

- [Tobacco Use Disorder](#)