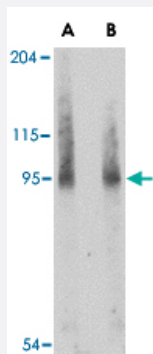


BICD2 polyclonal antibody

Catalog # PAB13388

Size 100 ug

Applications



Western Blot (Cell lysate)

Western blot analysis of BICD2 in A-549 cell lysate with BICD2 polyclonal antibody (Cat # PAB13388) at (A) 1 and (B) 2 ug/mL .

Specification

Product Description	Rabbit polyclonal antibody raised against synthetic peptide of BICD2.
Immunogen	A synthetic peptide corresponding to internal region 14 amino acids of human BICD2.
Host	Rabbit
Reactivity	Human, Mouse, Rat
Form	Liquid
Recommend Usage	Western Blot (1-2 ug/mL) The optimal working dilution should be determined by the end user.
Storage Buffer	In PBS (0.02% sodium azide)
Storage Instruction	Store at 4°C for three months. For long term storage store at -20°C. Aliquot to avoid repeated freezing and thawing.
Note	This product contains sodium azide: a POISONOUS AND HAZARDOUS SUBSTANCE which should be handled by trained staff only.

Applications

- Western Blot (Cell lysate)

Western blot analysis of BICD2 in A-549 cell lysate with BICD2 polyclonal antibody (Cat # PAB13388) at (A) 1 and (B) 2 ug/mL .

Gene Info — BICD2

Entrez GeneID	23299
Protein Accession#	CA41013
Gene Name	BICD2
Gene Alias	KIAA0699, bA526D8.1
Gene Description	bicaudal D homolog 2 (Drosophila)
Omim ID	609797
Gene Ontology	Hyperlink
Gene Summary	This gene is one of two human homologs of Drosophila bicaudal-D and a member of the Bicoid family. It has been implicated in dynein-mediated, minus end-directed motility along microtubules. It has also been reported to be a phosphorylation target of NIMA related kinase 8. Two alternative splice variants have been described. [provided by RefSeq]
Other Designations	OTTHUMP00000022790 OTTHUMP00000022791 bicaudal D homolog 2 coiled-coil protein BICD2 cytoskeleton-like bicaudal D protein homolog 2 homolog of Drosophila bicaudal D

Publication Reference

- [A novel mouse model with impaired dynein/dynactin function develops amyotrophic lateral sclerosis \(ALS\)-like features in motor neurons and improves lifespan in SOD1-ALS mice.](#)

Teuling E, van Dis V, Wulf PS, Haasdijk ED, Akhmanova A, Hoogenraad CC, Jaarsma D.

Human Molecular Genetics 2008 Sep; 17(18):2849.

Application: WB-Ti, Mouse, Mouse spinal cord

- [Purification, cloning, and characterization of Nek8, a novel NIMA-related kinase, and its candidate substrate Bicd2.](#)

Holland PM, Milne A, Garka K, Johnson RS, Willis C, Sims JE, Rauch CT, Bird TA, Virca GD.

The Journal of Biological Chemistry 2002 May; 277(18):16229.

Application: IF, WB-Ce, WB-Tr, Human, HeLa, HT29 cells

- [Mammalian Golgi-associated Bicaudal-D2 functions in the dynein-dynactin pathway by interacting with these complexes.](#)

Hoogenraad CC, Akhmanova A, Howell SA, Dortland BR, De Zeeuw CI, Willemsen R, Visser P, Grosveld F, Galjart N.

The EMBO Journal 2001 Aug; 20(15):4041.

Application: IEM, IF, IP, WB-Tr, Human, Monkey, COS-1, HeLa cells