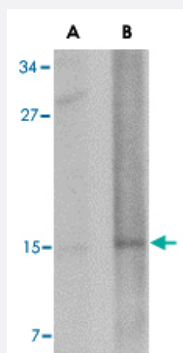


# NANOS2 polyclonal antibody

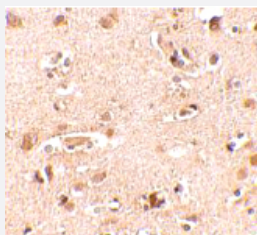
Catalog # PAB13383      Size 100 ug

## Applications



### Western Blot (Tissue lysate)

Western blot analysis of NANOS2 in rat brain tissue lysate with NANOS2 polyclonal antibody (Cat # PAB13383) at (A) 1 and (B) 2 ug/mL .



### Immunohistochemistry

Immunohistochemical staining of human brain tissue with 2.5 ug/mL NANOS2 polyclonal antibody (Cat # PAB13383).

## Specification

<b>Product Description</b>	Rabbit polyclonal antibody raised against synthetic peptide of NANOS2.
<b>Immunogen</b>	A synthetic peptide corresponding to N-terminus 13 amino acids of human NANOS2.
<b>Host</b>	Rabbit
<b>Reactivity</b>	Human, Mouse, Rat
<b>Form</b>	Liquid
<b>Recommend Usage</b>	Western Blot (1-2 ug/mL) The optimal working dilution should be determined by the end user.

Storage Buffer	In PBS (0.02% sodium azide)
Storage Instruction	Store at 4°C for three months. For long term storage store at -20°C. Aliquot to avoid repeated freezing and thawing.
Note	This product contains sodium azide: a POISONOUS AND HAZARDOUS SUBSTANCE which should be handled by trained staff only.

## Applications

- Western Blot (Tissue lysate)

Western blot analysis of NANOS2 in rat brain tissue lysate with NANOS2 polyclonal antibody (Cat # PAB13383) at (A) 1 and (B) 2 ug/mL .

- Immunohistochemistry

Immunohistochemical staining of human brain tissue with 2.5 ug/mL NANOS2 polyclonal antibody (Cat # PAB13383).

## Gene Info — NANOS2

Entrez GeneID	<a href="#">339345</a>
Protein Accession#	<a href="#">P60321</a>
Gene Name	NANOS2
Gene Alias	NOS2
Gene Description	nanos homolog 2 (Drosophila)
Omim ID	<a href="#">608228</a>
Gene Ontology	<a href="#">Hyperlink</a>
Other Designations	nanos homolog 2

## Publication Reference

- [Maternal Nanos represses hid/skl-dependent apoptosis to maintain the germ line in Drosophila embryos.](#)

Sato K, Hayashi Y, Ninomiya Y, Shigenobu S, Arita K, Mukai M, Kobayashi S.

PNAS 2007 May; 104(18):7455.

- [nanos1: a mouse nanos gene expressed in the central nervous system is dispensable for normal development.](#)

Haraguchi S, Tsuda M, Kitajima S, Sasaoka Y, Nomura-Kitabayashid A, Kurokawa K, Saga Y.

Mechanisms of Development 2003 Jun; 120(6):721.

- [The maternal gene nanos has a central role in posterior pattern formation of the Drosophila embryo.](#)

Lehmann R, Nusslein-Volhard C.

Development 1991 Jul; 112(3):679.