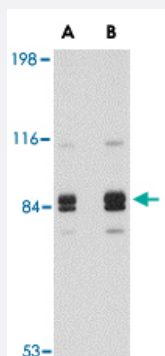


# SNPH polyclonal antibody

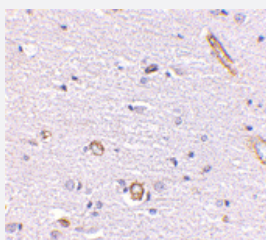
Catalog # PAB13380      Size 100 ug

## Applications



### Western Blot (Tissue lysate)

Western blot analysis of SNPH in rat brain tissue lysate with SNPH polyclonal antibody (Cat # PAB13380) at (A) 1 and (B) 2 ug/mL .



### Immunohistochemistry (Formalin/PFA-fixed paraffin-embedded sections)

Immunohistochemistry of SNPH in human brain with SNPH polyclonal antibody (Cat # PAB13380) at 5 ug/mL .

## Specification

<b>Product Description</b>	Rabbit polyclonal antibody raised against synthetic peptide of SNPH.
<b>Immunogen</b>	A synthetic peptide corresponding to internal region 16 amino acids of human SNPH.
<b>Host</b>	Rabbit
<b>Reactivity</b>	Human, Mouse, Rat
<b>Form</b>	Liquid
<b>Recommend Usage</b>	Western Blot (1-2 ug/mL) The optimal working dilution should be determined by the end user.

Storage Buffer	In PBS (0.02% sodium azide)
Storage Instruction	Store at 4°C for three months. For long term storage store at -20°C. Aliquot to avoid repeated freezing and thawing.
Note	This product contains sodium azide: a POISONOUS AND HAZARDOUS SUBSTANCE which should be handled by trained staff only.

## Applications

- Western Blot (Tissue lysate)

Western blot analysis of SNPH in rat brain tissue lysate with SNPH polyclonal antibody (Cat # PAB13380) at (A) 1 and (B) 2 ug/mL .

- Immunohistochemistry (Formalin/PFA-fixed paraffin-embedded sections)

Immunohistochemistry of SNPH in human brain with SNPH polyclonal antibody (Cat # PAB13380) at 5 ug/mL .

## Gene Info — SNPH

Entrez GeneID	<a href="#">9751</a>
Protein Accession#	<a href="#">Q15079</a>
Gene Name	SNPH
Gene Alias	KIAA0374, MGC46096, bA314N13.5
Gene Description	syntaphilin
Omim ID	<a href="#">604942</a>
Gene Ontology	<a href="#">Hyperlink</a>
Gene Summary	Syntaxin-1, synaptobrevin/VAMP, and SNAP25 interact to form the SNARE complex, which is required for synaptic vesicle docking and fusion. The protein encoded by this gene is membrane-associated and inhibits SNARE complex formation by binding free syntaxin-1. Expression of this gene appears to be brain-specific. [provided by RefSeq]
Other Designations	OTTHUMP00000070985

## Publication Reference

- [Docking of axonal mitochondria by syntaphilin controls their mobility and affects short-term facilitation.](#)

Kang JS, Tian JH, Pan PY, Zald P, Li C, Deng C, Sheng ZH.

Cell 2008 Jan; 132(1):137.

Application: IF, Rat, Rat hippocampal neurons

- [Syntaphilin binds to dynamin-1 and inhibits dynamin-dependent endocytosis.](#)

Das S, Gerwin C, Sheng ZH.

The Journal of Biological Chemistry 2003 Oct; 278(42):41221.

Application: IP, WB-Tr, Monkey, COS-7 cells

- [Syntaphilin: a syntaxin-1 clamp that controls SNARE assembly.](#)

Lao G, Scheuss V, Gerwin CM, Su Q, Mochida S, Rettig J, Sheng ZH.

Neuron 2000 Jan; 25(1):191.

Application: IF, IP, WB-Ti, WB-Tr, Human, Rat, Synaptosomes, Brain, Heart, Kidney, Liver, Lung, Muscle, Spleen, HEK 293T cells