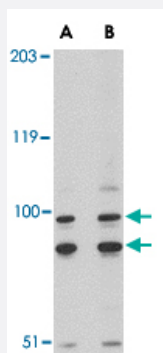


# SATB1 polyclonal antibody

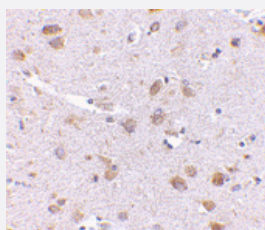
Catalog # PAB13379      Size 100 ug

## Applications



### Western Blot (Cell lysate)

Western blot analysis of SATB1 in A-20 cell lysate with SATB1 polyclonal antibody (Cat # PAB13379) at (A) 2 and (B) 4 ug/mL .



### Immunohistochemistry (Formalin/PFA-fixed paraffin-embedded sections)

Immunohistochemistry of SATB1 in human brain with SATB1 polyclonal antibody (Cat # PAB13379) at 5 ug/mL .

## Specification

<b>Product Description</b>	Rabbit polyclonal antibody raised against synthetic peptide of SATB1.
<b>Immunogen</b>	A synthetic peptide corresponding to C-terminus 15 amino acids of human SATB1.
<b>Host</b>	Rabbit
<b>Reactivity</b>	Human, Mouse, Rat
<b>Form</b>	Liquid
<b>Recommend Usage</b>	Western Blot (2-4 ug/mL) The optimal working dilution should be determined by the end user.

<b>Storage Buffer</b>	In PBS (0.02% sodium azide)
<b>Storage Instruction</b>	Store at 4°C for three months. For long term storage store at -20°C. Aliquot to avoid repeated freezing and thawing.
<b>Note</b>	This product contains sodium azide: a POISONOUS AND HAZARDOUS SUBSTANCE which should be handled by trained staff only.

## Applications

- Western Blot (Cell lysate)

Western blot analysis of SATB1 in A-20 cell lysate with SATB1 polyclonal antibody (Cat # PAB13379) at (A) 2 and (B) 4 ug/mL .

- Immunohistochemistry (Formalin/PFA-fixed paraffin-embedded sections)

Immunohistochemistry of SATB1 in human brain with SATB1 polyclonal antibody (Cat # PAB13379) at 5 ug/mL .

## Gene Info — SATB1

<b>Entrez GeneID</b>	<a href="#">6304</a>
<b>Protein Accession#</b>	<a href="#">Q01826</a>
<b>Gene Name</b>	SATB1
<b>Gene Alias</b>	-
<b>Gene Description</b>	SATB homeobox 1
<b>Omim ID</b>	<a href="#">602075</a>
<b>Gene Ontology</b>	<a href="#">Hyperlink</a>
<b>Other Designations</b>	DNA-binding protein SATB1 special AT-rich sequence binding protein 1 special AT-rich sequence binding protein 1 (binds to nuclear matrix/scaffold-associating DNA's)

## Publication Reference

- [PDZ domain-mediated dimerization and homeodomain-directed specificity are required for high-affinity DNA binding by SATB1.](#)

Purbey PK, Singh S, Kumar PP, Mehta S, Ganesh KN, Mitra D, Galande S.

Nucleic Acids Research 2008 Apr; 36(7):2107.

- [Tissue-specific nuclear architecture and gene expression regulated by SATB1.](#)

Cai S, Han HJ, Kohwi-Shigematsu T.

Nature Genetics 2003 May; 34(1):42.

Application: ChIP, IF, Mouse, Mouse thymocytes

- [Nucleolin is a matrix attachment region DNA-binding protein that specifically recognizes a region with high base-unpairing potential.](#)

Dickinson LA, Kohwi-Shigematsu T.

Molecular and Cellular Biology 1995 Jan; 15(1):456.

Application: Func, WB, Human, Mouse, K-562 cells, Mouse thymus

## Disease

- [Tobacco Use Disorder](#)