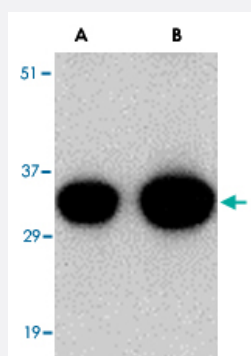


# NIPSNAP1 polyclonal antibody

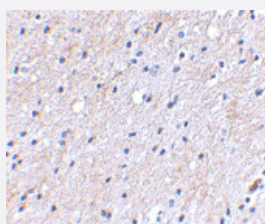
Catalog # PAB13353      Size 100 ug

## Applications



### Western Blot (Tissue lysate)

Western blot analysis of NIPSNAP1 in human brain tissue lysate with NIPSNAP1 polyclonal antibody (Cat # PAB13353) at (A) 0.5 and (B) 1 ug/mL .



### Immunohistochemistry (Formalin/PFA-fixed paraffin-embedded sections)

Immunohistochemical staining of human brain tissue using NIPSNAP1 polyclonal antibody (Cat # PAB13353) at 2.5 ug/mL .

## Specification

<b>Product Description</b>	Rabbit polyclonal antibody raised against synthetic peptide of NIPSNAP1.
<b>Immunogen</b>	A synthetic peptide corresponding to C-terminus 18 amino acids of human NIPSNAP1.
<b>Host</b>	Rabbit
<b>Reactivity</b>	Human, Mouse, Rat
<b>Form</b>	Liquid
<b>Recommend Usage</b>	Western Blot (0.5-1 ug/mL) The optimal working dilution should be determined by the end user.

Storage Buffer	In PBS (0.02% sodium azide)
Storage Instruction	Store at 4°C for three months. For long term storage store at -20°C. Aliquot to avoid repeated freezing and thawing.
Note	This product contains sodium azide: a POISONOUS AND HAZARDOUS SUBSTANCE which should be handled by trained staff only.

## Applications

- Western Blot (Tissue lysate)

Western blot analysis of NIPSNAP1 in human brain tissue lysate with NIPSNAP1 polyclonal antibody (Cat # PAB13353) at (A) 0.5 and (B) 1 ug/mL .

- Immunohistochemistry (Formalin/PFA-fixed paraffin-embedded sections)

Immunohistochemical staining of human brain tissue using NIPSNAP1 polyclonal antibody (Cat # PAB13353) at 2.5 ug/mL .

## Gene Info — NIPSNAP1

Entrez GeneID	<a href="#">8508</a>
Protein Accession#	<a href="#">NP_003625</a>
Gene Name	NIPSNAP1
Gene Alias	-
Gene Description	nipsnap homolog 1 (C. elegans)
Omim ID	<a href="#">603249</a>
Gene Ontology	<a href="#">Hyperlink</a>
Gene Summary	NIPSNAP1 protein has a strong sequence similarity to the central portion of a hypothetical protein encoded by C. elegans chromosome III between a 4-nitrophenylphosphatase (NIP) domain and non-neuronal SNAP25-like protein. The NIPSNAP1 gene is located between the NF2 and pK1.3 genes on 22q12. [provided by RefSeq]
Other Designations	4-nitrophenylphosphatase domain and non-neuronal SNAP25-like 1 NIPSNAP, C. elegans, homolog 1 nipsnap homolog 1

## Publication Reference

- [Identification of Nipsnap1 as a novel auxiliary protein inhibiting TRPV6 activity.](#)

Schoeber JP, Topala CN, Lee KP, Lambers TT, Ricard G, van der Kemp AW, Huynen MA, Hoenderop JG, Bindels RJ.  
Pflügers Archiv: European Journal of Physiology 2008 Oct; 457(1):91.

Application: IHC-P, Mouse, Mouse kidney

- [Expression of calpastatin, minopontin, NIPSNAP1, rabaptin-5 and neuronatin in the phenylketonuria \(PKU\) mouse brain: possible role on cognitive defect seen in PKU.](#)

Surendran S, Tying SK, Matalon R.

Neurochemistry International 2005 Jun; 46(8):595.

- [Characterization of the human NIPSNAP1 gene from 22q12: a member of a novel gene family.](#)

Seroussi E, Pan HQ, Kedra D, Roe BA, Dumanski JP.

Gene 1998 May; 212(1):13.