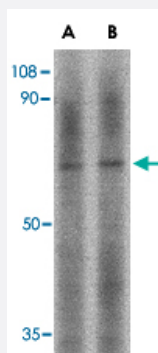


LGI2 polyclonal antibody

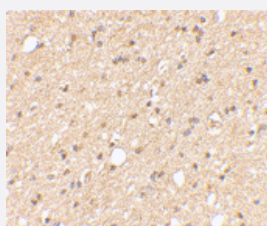
Catalog # PAB13352 Size 100 ug

Applications



Western Blot (Tissue lysate)

Western blot analysis of LGI2 in mouse liver tissue lysate with LGI2 polyclonal antibody (Cat # PAB13352) at (A) 1 and (B) 2 ug/mL .



Immunohistochemistry (Formalin/PFA-fixed paraffin-embedded sections)

Immunohistochemical staining of human brain tissue using LGI2 polyclonal antibody (Cat # PAB13352) at 2.5 ug/mL .

Specification

| | |
|----------------------------|--|
| Product Description | Rabbit polyclonal antibody raised against synthetic peptide of LGI2. |
| Immunogen | A synthetic peptide corresponding to internal region 10 amino acids of human LGI2. |
| Host | Rabbit |
| Reactivity | Human, Mouse |
| Form | Liquid |
| Recommend Usage | Western Blot (1-2 ug/mL) The optimal working dilution should be determined by the end user. |

| | |
|----------------------------|---|
| Storage Buffer | In PBS (0.02% sodium azide) |
| Storage Instruction | Store at 4°C for three months. For long term storage store at -20°C. Aliquot to avoid repeated freezing and thawing. |
| Note | This product contains sodium azide: a POISONOUS AND HAZARDOUS SUBSTANCE which should be handled by trained staff only. |

Applications

- Western Blot (Tissue lysate)

Western blot analysis of LGI2 in mouse liver tissue lysate with LGI2 polyclonal antibody (Cat # PAB13352) at (A) 1 and (B) 2 ug/mL .

- Immunohistochemistry (Formalin/PFA-fixed paraffin-embedded sections)

Immunohistochemical staining of human brain tissue using LGI2 polyclonal antibody (Cat # PAB13352) at 2.5 ug/mL .

Gene Info — LGI2

| | |
|---------------------------|---|
| Entrez GeneID | 55203 |
| Protein Accession# | Q8K4Z0 |
| Gene Name | LGI2 |
| Gene Alias | FLJ10675, KIAA1916, LGIL2, MGC126808, MGC126810 |
| Gene Description | leucine-rich repeat LGI family, member 2 |
| Omim ID | 608301 |
| Gene Ontology | Hyperlink |
| Gene Summary | O |
| Other Designations | LGI1-like protein 2 OTTHUMP00000123374 leucine-rich, glioma inactivated 2 |

Publication Reference

- [Using gene-history and expression analyses to assess the involvement of LGI genes in human disorders.](#)

Gu W, Gibert Y, Wirth T, Elischer A, Bloch W, Meyer A, Steinlein OK, Begemann G.

Molecular Biology and Evolution 2005 Jul; 22(11):2209.

- [LGI1 mutations in temporal lobe epilepsies.](#)

Berkovic SF, Izzillo P, McMahon JM, Harkin LA, McIntosh AM, Phillips HA, Briellmann RS, Wallace RH, Mazarib A, Neufeld MY, Korczyn AD, Scheffer IE, Mulley JC.

Neurology 2004 Apr; 62(7):1115.

- [A novel gene, LGI1, from 10q24 is rearranged and downregulated in malignant brain tumors.](#)

Chernova OB, Somerville RP, Cowell JK.

Oncogene 1998 Dec; 17(22):2873.