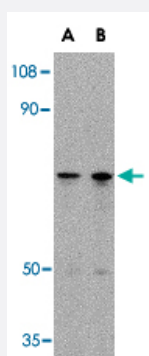


LGI2 polyclonal antibody

Catalog # PAB13342 Size 100 ug

Applications



Western Blot (Cell lysate)

Western blot analysis of LGI2 in 293 cell lysate with LGI2 polyclonal antibody (Cat # PAB13342) at (A) 1 and (B) 2 ug/mL .

Specification

Product Description	Rabbit polyclonal antibody raised against synthetic peptide of LGI2.
Immunogen	A synthetic peptide corresponding to N-terminus 11 amino acids of human LGI2.
Host	Rabbit
Reactivity	Human, Mouse, Rat
Form	Liquid
Recommend Usage	Western Blot (1-2 ug/mL) The optimal working dilution should be determined by the end user.
Storage Buffer	In PBS (0.02% sodium azide)
Storage Instruction	Store at 4°C for three months. For long term storage store at -20°C. Aliquot to avoid repeated freezing and thawing.
Note	This product contains sodium azide: a POISONOUS AND HAZARDOUS SUBSTANCE which should be handled by trained staff only.

Applications

- Western Blot (Cell lysate)

Western blot analysis of LGI2 in 293 cell lysate with LGI2 polyclonal antibody (Cat # PAB13342) at (A) 1 and (B) 2 ug/mL .

Gene Info — LGI2

Entrez GeneID	55203
Protein Accession#	Q8K4Z0
Gene Name	LGI2
Gene Alias	FLJ10675, KIAA1916, LGIL2, MGC126808, MGC126810
Gene Description	leucine-rich repeat LGI family, member 2
Omim ID	608301
Gene Ontology	Hyperlink
Gene Summary	O
Other Designations	LGI1-like protein 2 OTTHUMP00000123374 leucine-rich, glioma inactivated 2

Publication Reference

- [Using gene-history and expression analyses to assess the involvement of LGI genes in human disorders.](#)

Gu W, Gibert Y, Wirth T, Elischer A, Bloch W, Meyer A, Steinlein OK, Begemann G.

Molecular Biology and Evolution 2005 Jul; 22(11):2209.

- [LGI1 mutations in temporal lobe epilepsies.](#)

Berkovic SF, Izzillo P, McMahon JM, Harkin LA, McIntosh AM, Phillips HA, Briellmann RS, Wallace RH, Mazarib A, Neufeld MY, Korszyn AD, Scheffer IE, Mulley JC.

Neurology 2004 Apr; 62(7):1115.

- [A novel gene, LGI1, from 10q24 is rearranged and downregulated in malignant brain tumors.](#)

Chernova OB, Somerville RP, Cowell JK.

Oncogene 1998 Dec; 17(22):2873.