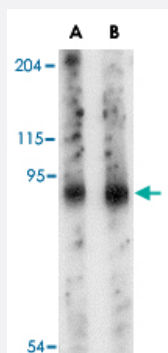


# SLITRK6 polyclonal antibody

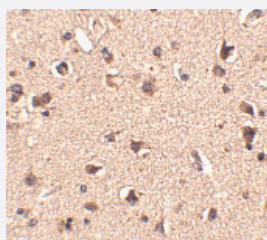
Catalog # PAB13337      Size 100 ug

## Applications



### Western Blot (Tissue lysate)

Western blot analysis of SLITRK6 in mouse lung tissue lysate with SLITRK6 polyclonal antibody (Cat # PAB13337) at (A) 0.5 and (B) 1 ug/mL .



### Immunohistochemistry (Formalin/PFA-fixed paraffin-embedded sections)

Immunohistochemistry of SLITRK6 in human brain tissue with SLITRK6 polyclonal antibody (Cat # PAB13337) at 2.5 ug/mL .

## Specification

<b>Product Description</b>	Rabbit polyclonal antibody raised against synthetic peptide of SLITRK6.
<b>Immunogen</b>	A synthetic peptide corresponding to internal region 13 amino acids of human SLITRK6.
<b>Host</b>	Rabbit
<b>Reactivity</b>	Human, Mouse, Rat
<b>Form</b>	Liquid
<b>Recommend Usage</b>	Western Blot (0.5-1 ug/mL) The optimal working dilution should be determined by the end user.

Storage Buffer	In PBS (0.02% sodium azide)
Storage Instruction	Store at 4°C for three months. For long term storage store at -20°C. Aliquot to avoid repeated freezing and thawing.
Note	This product contains sodium azide: a POISONOUS AND HAZARDOUS SUBSTANCE which should be handled by trained staff only.

## Applications

- Western Blot (Tissue lysate)

Western blot analysis of SLITRK6 in mouse lung tissue lysate with SLITRK6 polyclonal antibody (Cat # PAB13337) at (A) 0.5 and (B) 1 ug/mL .

- Immunohistochemistry (Formalin/PFA-fixed paraffin-embedded sections)

Immunohistochemistry of SLITRK6 in human brain tissue with SLITRK6 polyclonal antibody (Cat # PAB13337) at 2.5 ug/mL .

## Gene Info — SLITRK6

Entrez GeneID	<a href="#">84189</a>
Protein Accession#	<a href="#">Q9H5Y7</a>
Gene Name	SLITRK6
Gene Alias	MGC119595, MGC119596, MGC119597
Gene Description	SLIT and NTRK-like family, member 6
Omim ID	<a href="#">609681</a>
Gene Ontology	<a href="#">Hyperlink</a>
Gene Summary	Members of the SLITRK family, such as SLITRK6, are integral membrane proteins with 2 N-terminal leucine-rich repeat (LRR) domains similar to those of SLIT proteins (see SLIT1; MIM 603742). Most SLITRKs, including SLITRK6, also have C-terminal regions that share homology with neurotrophin receptors (see NTRK1; MIM 191315). SLITRKs are expressed predominantly in neural tissues and have neurite-modulating activity (Aruga et al., 2003 [PubMed 14557068]).[supplied by OMIM]
Other Designations	4832410J21Rik OTTHUMP00000066012 slit and trk like 6 slit and trk like gene 6

## Publication Reference

- [Slitrk6 expression profile in the mouse embryo and its relationship to that of Nlrr3.](#)

Aruga J.

Gene Expression Patterns 2003 Dec; 3(6):727.

- [Human SLITRK family genes: genomic organization and expression profiling in normal brain and brain tumor tissue.](#)

Aruga J, Yokota N, Mikoshiba K.

Gene 2003 Oct; 315:87.

- [Identification and characterization of Slitrk, a novel neuronal transmembrane protein family controlling neurite outgrowth.](#)

Aruga J, Mikoshiba K.

Molecular and Cellular Neurosciences 2003 Sep; 24(1):117.