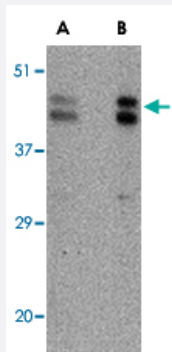


FBXL20 polyclonal antibody

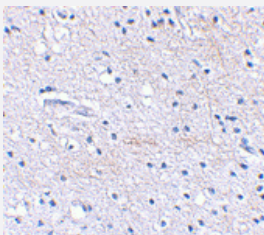
Catalog # PAB13325 Size 100 ug

Applications



Western Blot (Cell lysate)

Western blot analysis of FBXL20 in A-20 cell lysate with FBXL20 polyclonal antibody (Cat # PAB13325) at (A) 0.5 and (B) 1 ug/mL .



Immunohistochemistry (Formalin/PFA-fixed paraffin-embedded sections)

Immunohistochemical staining of human brain tissue using FBXL20 polyclonal antibody (Cat # PAB13325) at 2.5 ug/mL .

Specification

Product Description	Rabbit polyclonal antibody raised against synthetic peptide of FBXL20.
Immunogen	A synthetic peptide corresponding to C-terminus 18 amino acids of human FBXL20.
Host	Rabbit
Reactivity	Human, Mouse, Rat
Form	Liquid
Recommend Usage	Western Blot (0.5-1 ug/mL) The optimal working dilution should be determined by the end user.

Storage Buffer	In PBS (0.02% sodium azide)
Storage Instruction	Store at 4°C for three months. For long term storage store at -20°C. Aliquot to avoid repeated freezing and thawing.
Note	This product contains sodium azide: a POISONOUS AND HAZARDOUS SUBSTANCE which should be handled by trained staff only.

Applications

- Western Blot (Cell lysate)

Western blot analysis of FBXL20 in A-20 cell lysate with FBXL20 polyclonal antibody (Cat # PAB13325) at (A) 0.5 and (B) 1 ug/mL .

- Immunohistochemistry (Formalin/PFA-fixed paraffin-embedded sections)

Immunohistochemical staining of human brain tissue using FBXL20 polyclonal antibody (Cat # PAB13325) at 2.5 ug/mL .

Gene Info — FBXL20

Entrez GeneID	84961
Protein Accession#	NP_116264
Gene Name	FBXL20
Gene Alias	Fbl2, Fbl20, MGC15482, SCR, SCRAPPER
Gene Description	F-box and leucine-rich repeat protein 20
Omim ID	609086
Gene Ontology	Hyperlink
Gene Summary	Members of the F-box protein family, such as FBXL20, are characterized by an approximately 40-amino acid F-box motif. SCF complexes, formed by SKP1 (MIM 601434), cullin (see CUL1; MIM 603134), and F-box proteins, act as protein-ubiquitin ligases. F-box proteins interact with SKP1 through the F box, and they interact with ubiquitination targets through other protein interaction domains (Jin et al., 2004 [PubMed 15520277]).[supplied by OMIM]
Other Designations	F-box and leucine-rich repeat protein 20 variant b F-box protein FBL2

Publication Reference

- [A fight for neurotransmission: SCRAPPER trashes RIM.](#)

Dobie F, Craig AM.

Cell 2007 Sep; 130(5):775.

- [Spatial regulation of an E3 ubiquitin ligase directs selective synapse elimination.](#)

Ding M, Chao D, Wang G, Shen K.

Science 2007 Aug; 317(5840):947.

- [F-box proteins: the key to protein degradation.](#)

Ho MS, Tsai PI, Chien CT.

Journal of Biomedical Science 2006 Mar; 13(2):181.

Disease

- [Breast cancer](#)
- [Breast Neoplasms](#)
- [Genetic Predisposition to Disease](#)