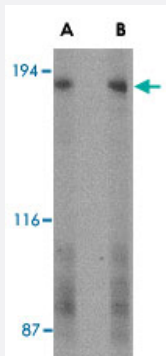


# GPR124 polyclonal antibody

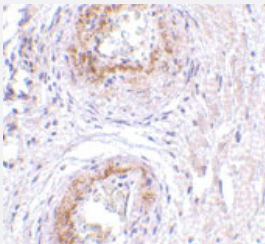
Catalog # PAB13307      Size 100 ug

## Applications



### Western Blot (Tissue lysate)

Western blot analysis of GPR124 in human bladder tissue lysate with GPR124 polyclonal antibody (Cat # PAB13307) at (A) 2 and (B) 4 ug/mL .



### Immunohistochemistry (Formalin/PFA-fixed paraffin-embedded sections)

Immunohistochemistry of GPR124 in human bladder tissue with GPR124 polyclonal antibody (Cat # PAB13307) at 5 ug/mL .

## Specification

<b>Product Description</b>	Rabbit polyclonal antibody raised against synthetic peptide of GPR124.
<b>Immunogen</b>	A synthetic peptide corresponding to C-terminus 15 amino acids of human GPR124.
<b>Host</b>	Rabbit
<b>Reactivity</b>	Human, Rat
<b>Form</b>	Liquid
<b>Recommend Usage</b>	Western Blot (1-2 ug/mL) The optimal working dilution should be determined by the end user.

Storage Buffer	In PBS (0.02% sodium azide)
Storage Instruction	Store at 4°C for three months. For long term storage store at -20°C. Aliquot to avoid repeated freezing and thawing.
Note	This product contains sodium azide: a POISONOUS AND HAZARDOUS SUBSTANCE which should be handled by trained staff only.

## Applications

- Western Blot (Tissue lysate)

Western blot analysis of GPR124 in human bladder tissue lysate with GPR124 polyclonal antibody (Cat # PAB13307) at (A) 2 and (B) 4 ug/mL .

- Immunohistochemistry (Formalin/PFA-fixed paraffin-embedded sections)

Immunohistochemistry of GPR124 in human bladder tissue with GPR124 polyclonal antibody (Cat # PAB13307) at 5 ug/mL .

## Gene Info — GPR124

Entrez GeneID	<a href="#">25960</a>
Protein Accession#	<a href="#">Q96PE1</a>
Gene Name	GPR124
Gene Alias	DKFZp434C211, DKFZp434J0911, FLJ14390, KIAA1531, TEM5
Gene Description	G protein-coupled receptor 124
Omim ID	<a href="#">606823</a>
Gene Ontology	<a href="#">Hyperlink</a>
Other Designations	tumor endothelial marker 5

## Publication Reference

- [Proteolytically processed soluble tumor endothelial marker \(TEM\) 5 mediates endothelial cell survival during angiogenesis by linking integrin alpha\(v\)beta3 to glycosaminoglycans.](#)

Vallon M, Essler M.

The Journal of Biological Chemistry 2006 Nov; 281(45):34179.

Application: WB, Human, HUVEC, HEK 293, TD2, eEND cells

- [A phase I and pharmacokinetic study of irinotecan given as a 7-day continuous infusion in metastatic colorectal cancer patients pretreated with 5-fluorouracil or raltitrexed.](#)

Masi G, Falcone A, Di Paolo A, Allegrini G, Danesi R, Barbara C, Cupini S, Del Tacca M.

Clinical Cancer Research 2004 Mar; 10(5):1657.

- [Cell surface tumor endothelial markers are conserved in mice and humans.](#)

Carson-Walter EB, Watkins DN, Nanda A, Vogelstein B, Kinzler KW, St Croix B.

Cancer Research 2001 Sep; 61(18):6649.