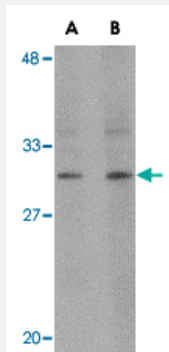


# RASD2 polyclonal antibody

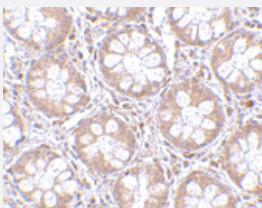
Catalog # PAB13305      Size 100 ug

## Applications



### Western Blot (Tissue lysate)

Western blot analysis of RASD2 in human colon tissue lysate with RASD2 polyclonal antibody (Cat # PAB13305) at (A) 1 and (B) 2 ug/mL .



### Immunohistochemistry (Formalin/PFA-fixed paraffin-embedded sections)

Immunohistochemistry of RASD2 in human colon tissue with RASD2 polyclonal antibody (Cat # PAB13305) at 2.5 ug/mL .

## Specification

<b>Product Description</b>	Rabbit polyclonal antibody raised against synthetic peptide of RASD2.
<b>Immunogen</b>	A synthetic peptide corresponding to C-terminus 15 amino acids of human RASD2.
<b>Host</b>	Rabbit
<b>Reactivity</b>	Human, Mouse, Rat
<b>Form</b>	Liquid
<b>Recommend Usage</b>	Western Blot (1-2 ug/mL) The optimal working dilution should be determined by the end user.

Storage Buffer	In PBS (0.02% sodium azide)
Storage Instruction	Store at 4°C for three months. For long term storage store at -20°C. Aliquot to avoid repeated freezing and thawing.
Note	This product contains sodium azide: a POISONOUS AND HAZARDOUS SUBSTANCE which should be handled by trained staff only.

## Applications

- Western Blot (Tissue lysate)

Western blot analysis of RASD2 in human colon tissue lysate with RASD2 polyclonal antibody (Cat # PAB13305) at (A) 1 and (B) 2 ug/mL .

- Immunohistochemistry (Formalin/PFA-fixed paraffin-embedded sections)

Immunohistochemistry of RASD2 in human colon tissue with RASD2 polyclonal antibody (Cat # PAB13305) at 2.5 ug/mL .

## Gene Info — RASD2

Entrez GeneID	<a href="#">23551</a>
Protein Accession#	<a href="#">Q96D21</a>
Gene Name	RASD2
Gene Alias	MGC:4834, Rhes, TEM2
Gene Description	RASD family, member 2
Gene Ontology	<a href="#">Hyperlink</a>
Gene Summary	This gene encodes a Ras-related protein that enriched in striatum. The product of this gene binds to GTP and possesses intrinsic GTPase activity. The gene belongs to the Ras superfamily of small GTPases. The exact function of this gene is unknown, but most striatum-specific mRNAs characterized to date encode components of signal transduction cascades. [provided by RefSeq]
Other Designations	GTP-binding protein Rhes Ras homolog enriched in striatum tumor endothelial marker 2

## Publication Reference

- [Rhes is involved in striatal function.](#)

Spano D, Branchi I, Rosica A, Pirro MT, Riccio A, Mithbaokar P, Affuso A, Arra C, Campolongo P, Terracciano D, Macchia V, Bernal J, Alleva E, Di Lauro R.

Molecular and Cellular Biochemistry 2004 Jul; 24(13):5788.

Application: WB, Human, Mouse, HeLa cells, Mouse brains

- [Thyroid hormone regulation of rhes, a novel Ras homolog gene expressed in the striatum.](#)

Vargiu P, Morte B, Manzano J, Perez J, de Abajo R, Gregor Sutcliffe J, Bernal J.

Brain Res Mol Brain Res 2001 Oct; 94(1-2):1.

Application: IHC-Fr, WB-Ti, Rat, Rat brains

- [Cell surface tumor endothelial markers are conserved in mice and humans.](#)

Carson-Walter EB, Watkins DN, Nanda A, Vogelstein B, Kinzler KW, St Croix B.

Cancer Research 2001 Sep; 61(18):6649.

## Disease

- [Attention](#)
- [Genetic Predisposition to Disease](#)
- [Neuropsychological Tests](#)
- [Problem Solving](#)
- [Schizophrenia](#)