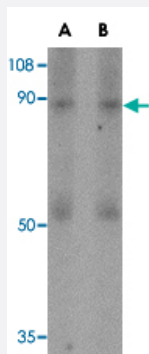


CD248 polyclonal antibody

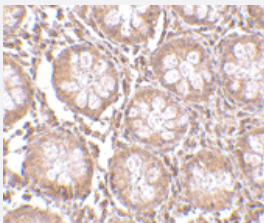
Catalog # PAB13304 Size 100 ug

Applications



Western Blot (Tissue lysate)

Western blot analysis of CD248 in human colon tissue lysate with CD248 polyclonal antibody (Cat # PAB13304) at (A) 0.5 and (B) 1 ug/mL .



Immunohistochemistry (Formalin/PFA-fixed paraffin-embedded sections)

Immunohistochemistry of CD248 in human colon tissue with CD248 polyclonal antibody (Cat # PAB13304) at 2.5 ug/mL .

Specification

Product Description	Rabbit polyclonal antibody raised against synthetic peptide of CD248.
Immunogen	A synthetic peptide corresponding to N-terminus 14 amino acids of human CD248.
Host	Rabbit
Reactivity	Human, Mouse, Rat
Form	Liquid
Recommend Usage	Western Blot (0.5-1 ug/mL) The optimal working dilution should be determined by the end user.

Storage Buffer	In PBS (0.02% sodium azide)
Storage Instruction	Store at 4°C for three months. For long term storage store at -20°C. Aliquot to avoid repeated freezing and thawing.
Note	This product contains sodium azide: a POISONOUS AND HAZARDOUS SUBSTANCE which should be handled by trained staff only.

Applications

- Western Blot (Tissue lysate)

Western blot analysis of CD248 in human colon tissue lysate with CD248 polyclonal antibody (Cat # PAB13304) at (A) 0.5 and (B) 1 ug/mL .

- Immunohistochemistry (Formalin/PFA-fixed paraffin-embedded sections)

Immunohistochemistry of CD248 in human colon tissue with CD248 polyclonal antibody (Cat # PAB13304) at 2.5 ug/mL .

Gene Info — CD248

Entrez GeneID	57124
Protein Accession#	NP_065137
Gene Name	CD248
Gene Alias	CD164L1, MGC119478, MGC119479, TEM1
Gene Description	CD248 molecule, endosialin
Omim ID	606064
Gene Ontology	Hyperlink
Gene Summary	O
Other Designations	2610111G01Rik CD164 sialomucin-like 1 CD248 antigen, endosialin endosialin tumor endothelial marker 1

Publication Reference

- [Schnurri-3 inhibition suppresses bone and joint damage in models of rheumatoid arthritis.](#)

Zheni Stavre, Jung-Min Kim, Yeon-Suk Yang, Kerstin Nündel, Sachin Chaugule, Tadatoshi Sato, Kwang Hwan Park, Guangping Gao, Ellen M Gravalles, Jae-Hyuck Shim.

PNAS 2023 May; 120(19):e221801912.

Application: IF, Mouse, Mouse synovial fibroblast

- [Macrophage-derived delta-like protein 1 enhances interleukin-6 and matrix metalloproteinase 3 production by fibroblast-like synoviocytes in mice with collagen-induced arthritis.](#)

Sekine C, Nanki T, Yagita H.

Arthritis & Rheumatology 2014 Oct; 66(10):2751.

Application: IF, Mouse, Fibroblast-like synoviocytes

- [Characterisation of fibroblast-like synoviocytes from a murine model of joint inflammation.](#)

Hardy RS, Hulso C, Liu Y, Gasparini SJ, Fong-Yee C, Tu J, Stoner S, Stewart PM, Raza K, Cooper MS, Seibel MJ, Zhou H.

Arthritis Research & Therapy 2013 Jan; 15(1):R24.

Application: IFA,IHC, Mouse, FLS cells

- [Tumor endothelial marker 1 \(Tem1\) functions in the growth and progression of abdominal tumors.](#)

Nanda A, Karim B, Peng Z, Liu G, Qiu W, Gan C, Vogelstein B, St Croix B, Kinzler KW, Huso DL.

PNAS 2006 Feb; 103(9):3351.

- [Tumor endothelial markers: new targets for cancer therapy.](#)

Nanda A, St Croix B.

Current Opinion in Oncology 2004 Jan; 16(1):44.

- [Molecular cloning and characterization of endosialin, a C-type lectin-like cell surface receptor of tumor endothelium.](#)

Christian S, Ahorn H, Koehler A, Eisenhaber F, Rodi HP, Garin-Chesa P, Park JE, Rettig WJ, Lenter MC.

The Journal of Biological Chemistry 2001 Mar; 276(10):7408.

Disease

- [Kidney Failure](#)