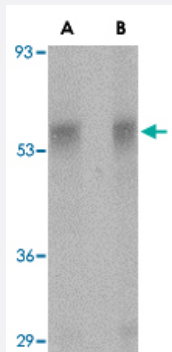


# PLXDC1 polyclonal antibody

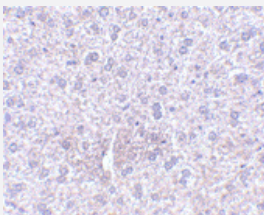
Catalog # PAB13298      Size 100 ug

## Applications



### Western Blot (Tissue lysate)

Western blot analysis of PLXDC1 in rat liver tissue lysate with PLXDC1 polyclonal antibody (Cat # PAB13298) at (A) 0.5 and (B) 1 ug/mL .



### Immunohistochemistry (Formalin/PFA-fixed paraffin-embedded sections)

Immunohistochemistry of PLXDC1 in mouse liver tissue with PLXDC1 polyclonal antibody (Cat # PAB13298) at 2.5 ug/mL .

## Specification

<b>Product Description</b>	Rabbit polyclonal antibody raised against synthetic peptide of PLXDC1.
<b>Immunogen</b>	A synthetic peptide corresponding to internal region 16 amino acids of human PLXDC1.
<b>Host</b>	Rabbit
<b>Reactivity</b>	Human, Mouse, Rat
<b>Form</b>	Liquid
<b>Recommend Usage</b>	Western Blot (0.5-1 ug/mL) The optimal working dilution should be determined by the end user.

<b>Storage Buffer</b>	In PBS (0.02% sodium azide)
<b>Storage Instruction</b>	Store at 4°C for three months. For long term storage store at -20°C. Aliquot to avoid repeated freezing and thawing.
<b>Note</b>	This product contains sodium azide: a POISONOUS AND HAZARDOUS SUBSTANCE which should be handled by trained staff only.

## Applications

- Western Blot (Tissue lysate)

Western blot analysis of PLXDC1 in rat liver tissue lysate with PLXDC1 polyclonal antibody (Cat # PAB13298) at (A) 0.5 and (B) 1 ug/mL .

- Immunohistochemistry (Formalin/PFA-fixed paraffin-embedded sections)

Immunohistochemistry of PLXDC1 in mouse liver tissue with PLXDC1 polyclonal antibody (Cat # PAB13298) at 2.5 ug/mL .

## Gene Info — PLXDC1

**Entrez GeneID** [57125](#)

**Protein Accession#** [AAG00869](#)

**Gene Name** PLXDC1

**Gene Alias** DKFZp686F0937, FLJ36270, FLJ45632, TEM3, TEM7

**Gene Description** plexin domain containing 1

**Omim ID** [606826](#)

**Gene Ontology** [Hyperlink](#)

**Other Designations** 2410003I07Rik|tumor endothelial marker 7

## Publication Reference

- [High expression of tumor endothelial marker 7 is associated with metastasis and poor survival of patients with osteogenic sarcoma.](#)

Fuchs B, Mahlum E, Halder C, Maran A, Yaszemski M, Bode B, Bolander M, Sarkar G.

Gene 2007 Sep; 399(2):137.

Application: IHC-P, WB, Human, Osteosarcoma, SaOS, TE85 cells

- [Cell surface tumor endothelial markers are conserved in mice and humans.](#)

Carson-Walter EB, Watkins DN, Nanda A, Vogelstein B, Kinzler KW, St Croix B.

Cancer Research 2001 Sep; 61(18):6649.

## Disease

- [Tobacco Use Disorder](#)