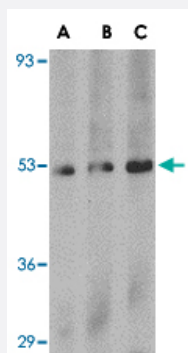


PLXDC1 polyclonal antibody

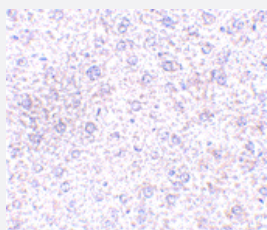
Catalog # PAB13297 Size 100 ug

Applications



Western Blot (Tissue lysate)

Western blot analysis of PLXDC1 in human liver tissue lysate with PLXDC1 polyclonal antibody (Cat # PAB13297) at (A) 0.5, (B) 1 and (C) 2 ug/mL .



Immunohistochemistry (Formalin/PFA-fixed paraffin-embedded sections)

Immunohistochemistry of PLXDC1 in mouse liver tissue with PLXDC1 polyclonal antibody (Cat # PAB13297) at 2.5 ug/mL .

Specification

Product Description	Rabbit polyclonal antibody raised against synthetic peptide of PLXDC1.
Immunogen	A synthetic peptide corresponding to C-terminus 16 amino acids of human PLXDC1.
Host	Rabbit
Reactivity	Human, Mouse, Rat
Form	Liquid
Recommend Usage	Western Blot (0.5-1 ug/mL) The optimal working dilution should be determined by the end user.

Storage Buffer	In PBS (0.02% sodium azide)
Storage Instruction	Store at 4°C for three months. For long term storage store at -20°C. Aliquot to avoid repeated freezing and thawing.
Note	This product contains sodium azide: a POISONOUS AND HAZARDOUS SUBSTANCE which should be handled by trained staff only.

Applications

- Western Blot (Tissue lysate)

Western blot analysis of PLXDC1 in human liver tissue lysate with PLXDC1 polyclonal antibody (Cat # PAB13297) at (A) 0.5, (B) 1 and (C) 2 ug/mL .

- Immunohistochemistry (Formalin/PFA-fixed paraffin-embedded sections)

Immunohistochemistry of PLXDC1 in mouse liver tissue with PLXDC1 polyclonal antibody (Cat # PAB13297) at 2.5 ug/mL .

Gene Info — PLXDC1

Entrez GeneID	57125
Protein Accession#	AAG00869
Gene Name	PLXDC1
Gene Alias	DKFZp686F0937, FLJ36270, FLJ45632, TEM3, TEM7
Gene Description	plexin domain containing 1
Omim ID	606826
Gene Ontology	Hyperlink
Other Designations	2410003107Rik tumor endothelial marker 7

Publication Reference

- [High expression of tumor endothelial marker 7 is associated with metastasis and poor survival of patients with osteogenic sarcoma.](#)

Fuchs B, Mahlum E, Halder C, Maran A, Yaszemski M, Bode B, Bolander M, Sarkar G.

Gene 2007 Sep; 399(2):137.

Application: IHC-P, WB, Human, Osteosarcoma, SaOS, TE85 cells

- [Cell surface tumor endothelial markers are conserved in mice and humans.](#)

Carson-Walter EB, Watkins DN, Nanda A, Vogelstein B, Kinzler KW, St Croix B.

Cancer Research 2001 Sep; 61(18):6649.

Disease

- [Tobacco Use Disorder](#)