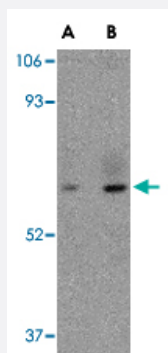


# STEAP1 polyclonal antibody

Catalog # PAB13291

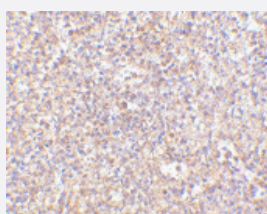
Size 100 ug

## Applications



### Western Blot (Tissue lysate)

Western blot analysis of STEAP1 in human spleen tissue lysate with STEAP1 polyclonal antibody (Cat # PAB13291) at (A) 1 and (B) 2 ug/mL .



### Immunohistochemistry (Formalin/PFA-fixed paraffin-embedded sections)

Immunohistochemistry of STEAP1 in human spleen tissue with STEAP1 polyclonal antibody (Cat # PAB13291) at 2.5 ug/mL .

## Specification

### Product Description

Rabbit polyclonal antibody raised against synthetic peptide of STEAP1.

### Immunogen

A synthetic peptide corresponding to C-terminus 18 amino acids of human STEAP1.

### Host

Rabbit

### Reactivity

Human, Mouse, Rat

### Form

Liquid

### Recommend Usage

Western Blot (1-2 ug/mL)

The optimal working dilution should be determined by the end user.

Storage Buffer	In PBS (0.02% sodium azide)
Storage Instruction	Store at 4°C for three months. For long term storage store at -20°C. Aliquot to avoid repeated freezing and thawing.
Note	This product contains sodium azide: a POISONOUS AND HAZARDOUS SUBSTANCE which should be handled by trained staff only.

## Applications

- Western Blot (Tissue lysate)

Western blot analysis of STEAP1 in human spleen tissue lysate with STEAP1 polyclonal antibody (Cat # PAB13291) at (A) 1 and (B) 2 ug/mL .

- Immunohistochemistry (Formalin/PFA-fixed paraffin-embedded sections)

Immunohistochemistry of STEAP1 in human spleen tissue with STEAP1 polyclonal antibody (Cat # PAB13291) at 2.5 ug/mL .

## Gene Info — STEAP1

Entrez GeneID	<a href="#">26872</a>
Protein Accession#	<a href="#">EAL24166</a>
Gene Name	STEAP1
Gene Alias	MGC19484, PRSS24, STEAP
Gene Description	six transmembrane epithelial antigen of the prostate 1
Omim ID	<a href="#">604415</a>
Gene Ontology	<a href="#">Hyperlink</a>
Gene Summary	This gene is predominantly expressed in prostate tissue, and is found to be upregulated in multiple cancer cell lines. The gene product is predicted to be a six-transmembrane protein, and was shown to be a cell surface antigen significantly expressed at cell-cell junctions. [provided by RefSeq]
Other Designations	six transmembrane epithelial antigen of the prostate

## Publication Reference

- [STEAP, a prostate tumor antigen, is a target of human CD8+ T cells.](#)

Alves PM, Faure O, Graff-Dubois S, Cornet S, Bolonakis I, Gross DA, Miconnet I, Chouaib S, Fizazi K, Soria JC, Lemonnier FA, Kosmatopoulos K.

Cancer Immunology, Immunotherapy : CII 2006 Dec; 55(12):1515.

Application: WB-Ce, Human, 1355, DU145, LNCaP, M113, MCF-7 cells

- [Identification of a ferrireductase required for efficient transferrin-dependent iron uptake in erythroid cells.](#)

Ohgami RS, Campagna DR, Greer EL, Antiochos B, McDonald A, Chen J, Sharp JJ, Fujiwara Y, Barker JE, Fleming MD.

Nature Genetics 2005 Oct; 37(11):1264.

- [STEAP: a prostate-specific cell-surface antigen highly expressed in human prostate tumors.](#)

Hubert RS, Vivanco I, Chen E, Rastegar S, Leong K, Mitchell SC, Madraswala R, Zhou Y, Kuo J, Raitano AB, Jakobovits A, Saffran DC, Afar DE.

PNAS 1999 Dec; 96(25):14523.

Application: IHC-P, WB-Ce, WB-Ti, WB-Tr, Human, Mouse, 3T3 STEAP, 3T3, LAPC-4 AD, LAPC-9 AD, LAPC-9 AI, Prostate, LNCaP, DU145, PC-3, HeLa, Colo 205, CaCo-2, LoVo, UM-UC-3, TCCSUP, 5637, OV-1063, PA-1, SW 626, BxPC-3, HPAC, Capan-1, RO-ES cells, Bladder,

## Disease

- [Breast cancer](#)
- [Breast Neoplasms](#)
- [Genetic Predisposition to Disease](#)
- [Ovarian Neoplasms](#)