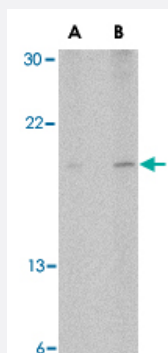


SLPI polyclonal antibody

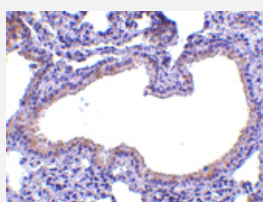
Catalog # PAB13274 Size 100 ug

Applications



Western Blot (Cell lysate)

Western blot analysis of SLPI in Daudi cell lysate with SLPI polyclonal antibody (Cat # PAB13274) at (A) 1 and (B) 2 ug/mL .



Immunohistochemistry (Formalin/PFA-fixed paraffin-embedded sections)

Immunohistochemistry of SLPI in mouse lung tissue with SLPI polyclonal antibody (Cat # PAB13274) at 10 ug/mL .

Specification

Product Description	Rabbit polyclonal antibody raised against synthetic peptide of SLPI.
Immunogen	A synthetic peptide corresponding to internal region amino acids 60 -110 of human SLPI.
Host	Rabbit
Theoretical MW (kDa)	19
Reactivity	Human, Mouse
Form	Liquid

Purification	Affinity chromatography purified via peptide column
Recommend Usage	Immunohistochemistry (10 ug/mL) Western Blot (0.5-1 ug/mL) The optimal working dilution should be determined by the end user.
Storage Buffer	In PBS (0.02% sodium azide)
Storage Instruction	Store at 4°C for three months. For long term storage store at -20°C. Aliquot to avoid repeated freezing and thawing.
Note	This product contains sodium azide: a POISONOUS AND HAZARDOUS SUBSTANCE which should be handled by trained staff only.

Applications

- Western Blot (Cell lysate)

Western blot analysis of SLPI in Daudi cell lysate with SLPI polyclonal antibody (Cat # PAB13274) at (A) 1 and (B) 2 ug/mL .

- Immunohistochemistry (Formalin/PFA-fixed paraffin-embedded sections)

Immunohistochemistry of SLPI in mouse lung tissue with SLPI polyclonal antibody (Cat # PAB13274) at 10 ug/mL .

Gene Info — SLPI

Entrez GeneID	6590
Protein Accession#	CAA28187
Gene Name	SLPI
Gene Alias	ALK1, ALP, BLPI, HUSI, HUSH, MPI, WAP4, WFDC4
Gene Description	secretory leukocyte peptidase inhibitor
Omim ID	107285
Gene Ontology	Hyperlink
Gene Summary	This gene encodes a secreted inhibitor which protects epithelial tissues from serine proteases. It is found in various secretions including seminal plasma, cervical mucus, and bronchial secretions, and has affinity for trypsin, leukocyte elastase, and cathepsin G. Its inhibitory effect contributes to the immune response by protecting epithelial surfaces from attack by endogenous proteolytic enzymes; the protein is also thought to have broad-spectrum anti-biotic activity. [provided by RefSeq

Other Designations

OTTHUMP00000031775|WAP four-disulfide core domain 4|antileukoproteinase|mucus proteinase inhibitor|secretory leukocyte protease inhibitor (antileukoproteinase)|seminal proteinase inhibitor

Publication Reference

- [Human immunodeficiency virus type 1 stimulates the expression and production of secretory leukocyte protease inhibitor \(SLPI\) in oral epithelial cells: a role for SLPI in innate mucosal immunity.](#)

Jana NK, Gray LR, Shugars DC.

Journal of Virology 2005 May; 79(10):6432.

Application: ELISA, IHC, Human, HGE, GSM-K, OFK6 cells

- [Antimicrobial peptides: mediators of innate immunity as templates for the development of novel anti-infective and immune therapeutics.](#)

Hiemstra PS, Fernie-King BA, McMichael J, Lachmann PJ, Sallenave JM.

Curr Pharm Des 2004 Jan; 10(23):2891.

- [Expression of the secretory leukoprotease inhibitor gene in epithelial cells.](#)

Abe T, Kobayashi N, Yoshimura K, Trapnell BC, Kim H, Hubbard RC, Brewer MT, Thompson RC, Crystal RG.

The Journal of Clinical Investigation 1991 Jun; 87(6):2207.