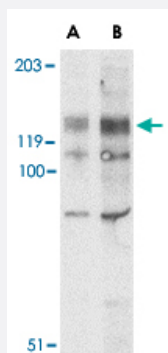


# BUB1 polyclonal antibody

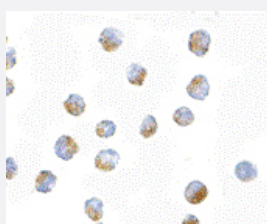
Catalog # PAB13270      Size 100 ug

## Applications



### Western Blot (Cell lysate)

Western blot analysis of BUB1 in A-20 lysate with BUB1 polyclonal antibody (Cat # PAB13270) at (A) 2 and (B) 4 ug/mL .



### Immunocytochemistry

Immunocytochemistry of BUB1 in A-20 cells with BUB1 polyclonal antibody (Cat # PAB13270) at 10 ug/mL .

## Specification

<b>Product Description</b>	Rabbit polyclonal antibody raised against synthetic peptide of BUB1.
<b>Immunogen</b>	A synthetic peptide corresponding to N-terminus 19 amino acids of human BUB1.
<b>Host</b>	Rabbit
<b>Reactivity</b>	Human, Mouse
<b>Form</b>	Liquid
<b>Recommend Usage</b>	Western Blot (2-4 ug/mL) The optimal working dilution should be determined by the end user.

<b>Storage Buffer</b>	In PBS (0.02% sodium azide)
<b>Storage Instruction</b>	Store at 4°C for three months. For long term storage store at -20°C. Aliquot to avoid repeated freezing and thawing.
<b>Note</b>	This product contains sodium azide: a POISONOUS AND HAZARDOUS SUBSTANCE which should be handled by trained staff only.

## Applications

- Western Blot (Cell lysate)

Western blot analysis of BUB1 in A-20 lysate with BUB1 polyclonal antibody (Cat # PAB13270) at (A) 2 and (B) 4 ug/mL .

- Immunocytochemistry

Immunocytochemistry of BUB1 in A-20 cells with BUB1 polyclonal antibody (Cat # PAB13270) at 10 ug/mL .

## Gene Info — BUB1

<b>Entrez GeneID</b>	<a href="#">699</a>
<b>Protein Accession#</b>	<a href="#">O43683</a>
<b>Gene Name</b>	BUB1
<b>Gene Alias</b>	BUB1A, BUB1L, hBUB1
<b>Gene Description</b>	budding uninhibited by benzimidazoles 1 homolog (yeast)
<b>Omim ID</b>	<a href="#">602452</a>
<b>Gene Ontology</b>	<a href="#">Hyperlink</a>
<b>Gene Summary</b>	This gene encodes a kinase involved in spindle checkpoint function. The kinase functions in part by phosphorylating a member of the mitotic checkpoint complex and activating the spindle checkpoint. Mutations in this gene have been associated with aneuploidy and several forms of cancer. [provided by RefSeq]
<b>Other Designations</b>	BUB1 budding uninhibited by benzimidazoles 1 homolog budding uninhibited by benzimidazoles 1 mitotic spindle checkpoint kinase putative serine/threonine-protein kinase

## Publication Reference

- [A dual role for Bub1 in the spindle checkpoint and chromosome congression.](#)

Meraldi P, Sorger PK.

The EMBO Journal 2005 Apr; 24(8):1621.

Application: IF, WB, Human, HeLa cells

- [Phosphorylation of Cdc20 by Bub1 provides a catalytic mechanism for APC/C inhibition by the spindle checkpoint.](#)

Tang Z, Shu H, Oncel D, Chen S, Yu H.

Molecular Cell 2004 Nov; 16(3):387.

Application: IP, WB, Human, HeLa cells

- [Mammalian BUB1 protein kinases: map positions and in vivo expression.](#)

Pangilinan F, Li Q, Weaver T, Lewis BC, Dang CV, Spencer F.

Genomics 1997 Dec; 46(3):379.

## Pathway

- [Cell cycle](#)

## Disease

- [Alcoholism](#)
- [Breast cancer](#)
- [Breast Neoplasms](#)
- [Carcinoma](#)
- [Conduct Disorder](#)
- [Genetic Predisposition to Disease](#)
- [Ovarian Neoplasms](#)