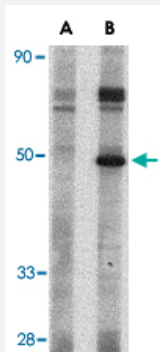


# Crlf2 polyclonal antibody

Catalog # PAB13268      Size 100 ug

## Applications



### Western Blot (Tissue lysate)

Western blot analysis of Crlf2 in mouse heart tissue lysate with Crlf2 polyclonal antibody (Cat # PAB13268) at 1 ug/mL in (A) the presence and (B) the absence of blocking peptide.

## Specification

<b>Product Description</b>	Rabbit polyclonal antibody raised against synthetic peptide of Crlf2.
<b>Immunogen</b>	A synthetic peptide corresponding to internal region 21 amino acids of mouse Crlf2.
<b>Host</b>	Rabbit
<b>Reactivity</b>	Mouse
<b>Form</b>	Liquid
<b>Recommend Usage</b>	Western Blot (0.5-1 ug/mL) The optimal working dilution should be determined by the end user.
<b>Storage Buffer</b>	In PBS (0.02% sodium azide)
<b>Storage Instruction</b>	Store at 4°C for three months. For long term storage store at -20°C. Aliquot to avoid repeated freezing and thawing.
<b>Note</b>	This product contains sodium azide: a POISONOUS AND HAZARDOUS SUBSTANCE which should be handled by trained staff only.

## Applications

- Western Blot (Tissue lysate)

Western blot analysis of Crlf2 in mouse heart tissue lysate with Crlf2 polyclonal antibody (Cat # PAB13268) at 1 ug/mL in (A) the presence and (B) the absence of blocking peptide.

## Gene Info — Crlf2

Entrez GeneID	<a href="#">57914</a>
Protein Accession#	<a href="#">NP_057924</a>
Gene Name	Crlf2
Gene Alias	CRLM2, Ly114, Tpte2, Tslpr
Gene Description	cytokine receptor-like factor 2
Gene Ontology	<a href="#">Hyperlink</a>
Gene Summary	receptor transmembrane phosphoinositide 3-phosphatase and tensin homolog 2
Other Designations	delta 1 lymphocyte antigen 114 thymic stromal-derived lymphopoietin, receptor transmembrane p hosphoinositide 3-phosphatase and tensin homolog 2

## Publication Reference

- [Molecular cloning and biological characterization of a novel murine lymphoid growth factor.](#)

Sims JE, Williams DE, Morrissey PJ, Garka K, Foxworthe D, Price V, Friend SL, Farr A, Bedell MA, Jenkins NA, Copeland NG, Grabstein K, Paxton RJ.

The Journal of Experimental Medicine 2000 Sep; 192(5):671.

- [Cloning of the murine thymic stromal lymphopoietin \(TSLP\) receptor: Formation of a functional heteromeric complex requires interleukin 7 receptor.](#)

Park LS, Martin U, Garka K, Gliniak B, Di Santo JP, Muller W, Largaespada DA, Copeland NG, Jenkins NA, Farr AG, Ziegler SF, Morrissey PJ, Paxton R, Sims JE.

The Journal of Experimental Medicine 2000 Sep; 192(5):659.

- [Thymic stromal lymphopoietin: a cytokine that promotes the development of IgM+ B cells in vitro and signals via a novel mechanism.](#)

Levin SD, Koelling RM, Friend SL, Isaksen DE, Ziegler SF, Perlmutter RM, Farr AG.

The Journal of Immunology 1999 Jan; 162(2):677.