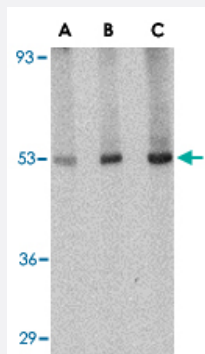


# CRLF2 polyclonal antibody

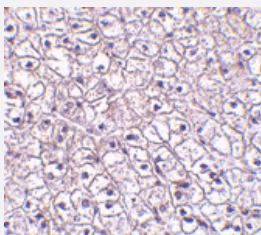
Catalog # PAB13267      Size 100 ug

## Applications



### Western Blot (Tissue lysate)

Western blot analysis of CRLF2 in human liver tissue lysate with CRLF2 polyclonal antibody (Cat # PAB13267) at (A) 0.5, (B) 1 and (C) 2 ug/mL .



### Immunohistochemistry (Formalin/PFA-fixed paraffin-embedded sections)

Immunohistochemistry of CRLF2 in human liver tissue with CRLF2 polyclonal antibody (Cat # PAB13267) at 5 ug/mL .

## Specification

<b>Product Description</b>	Rabbit polyclonal antibody raised against synthetic peptide of CRLF2.
<b>Immunogen</b>	A synthetic peptide corresponding to internal region 19 amino acids of human CRLF2.
<b>Host</b>	Rabbit
<b>Reactivity</b>	Human
<b>Form</b>	Liquid
<b>Recommend Usage</b>	Western Blot (0.5-1 ug/mL) The optimal working dilution should be determined by the end user.

Storage Buffer	In PBS (0.02% sodium azide)
Storage Instruction	Store at 4°C for three months. For long term storage store at -20°C. Aliquot to avoid repeated freezing and thawing.
Note	This product contains sodium azide: a POISONOUS AND HAZARDOUS SUBSTANCE which should be handled by trained staff only.

## Applications

- Western Blot (Tissue lysate)

Western blot analysis of CRLF2 in human liver tissue lysate with CRLF2 polyclonal antibody (Cat # PAB13267) at (A) 0.5, (B) 1 and (C) 2 ug/mL .

- Immunohistochemistry (Formalin/PFA-fixed paraffin-embedded sections)

Immunohistochemistry of CRLF2 in human liver tissue with CRLF2 polyclonal antibody (Cat # PAB13267) at 5 ug/mL .

## Gene Info — CRLF2

Entrez GeneID	<a href="#">64109</a>
Protein Accession#	<a href="#">Q9HC73</a>
Gene Name	CRLF2
Gene Alias	CRL2, CRLF2Y, TSLPR
Gene Description	cytokine receptor-like factor 2
Omim ID	<a href="#">300357</a> <a href="#">400023</a>
Gene Ontology	<a href="#">Hyperlink</a>
Gene Summary	Cytokine signals are mediated through specific receptor complexes, the components of which are mostly members of the type I cytokine receptor family. Type I cytokine receptors share conserved structural features in their extracellular domain. Receptor complexes are typically heterodimeric, consisting of alpha chains, which provide ligand specificity, and beta (or gamma) chains, which are required for the formation of high-affinity binding sites and signal transduction.[supplied by OMIM]
Other Designations	cytokine receptor CRL2 precursor thymic stromal lymphopoietin receptor thymic stromal-derived lymphopoietin receptor

## Publication Reference

- [Molecular cloning and biological characterization of a novel murine lymphoid growth factor.](#)

Sims JE, Williams DE, Morrissey PJ, Garka K, Foxworthe D, Price V, Friend SL, Farr A, Bedell MA, Jenkins NA, Copeland NG, Grabstein K, Paxton RJ.

The Journal of Experimental Medicine 2000 Sep; 192(5):671.

- [Cloning of the murine thymic stromal lymphopoietin \(TSLP\) receptor: Formation of a functional heteromeric complex requires interleukin 7 receptor.](#)

Park LS, Martin U, Garka K, Gliniak B, Di Santo JP, Muller W, Largaespada DA, Copeland NG, Jenkins NA, Farr AG, Ziegler SF, Morrissey PJ, Paxton R, Sims JE.

The Journal of Experimental Medicine 2000 Sep; 192(5):659.

- [Thymic stromal lymphopoietin: a cytokine that promotes the development of IgM+ B cells in vitro and signals via a novel mechanism.](#)

Levin SD, Koelling RM, Friend SL, Isaksen DE, Ziegler SF, Perlmutter RM, Farr AG.

The Journal of Immunology 1999 Jan; 162(2):677.

## Pathway

- [Cytokine-cytokine receptor interaction](#)
- [Jak-STAT signaling pathway](#)

## Disease

- [Asthma](#)
- [Dermatitis](#)
- [Kaposi Varicelliform Eruption](#)