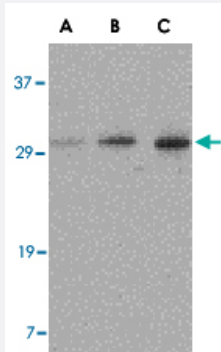


# C12orf5 polyclonal antibody

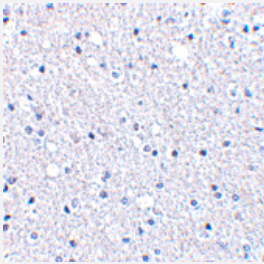
Catalog # PAB13249      Size 100 ug

## Applications



### Western Blot (Cell lysate)

Western blot analysis of C12orf5 in EL4 cell lysate with C12orf5 polyclonal antibody (Cat # PAB13249) at (A) 0.5, (B) 1 and (C) 2 ug/mL .



### Immunohistochemistry (Formalin/PFA-fixed paraffin-embedded sections)

Immunohistochemistry of C12orf5 in human brain tissue with C12orf5 polyclonal antibody (Cat # PAB13249) at 2.5 ug/mL .

## Specification

<b>Product Description</b>	Rabbit polyclonal antibody raised against synthetic peptide of C12orf5.
<b>Immunogen</b>	A synthetic peptide corresponding to internal region 18 amino acids of human C12orf5.
<b>Host</b>	Rabbit
<b>Reactivity</b>	Human, Mouse, Rat
<b>Form</b>	Liquid
<b>Recommend Usage</b>	Western Blot (0.5-1 ug/mL) The optimal working dilution should be determined by the end user.

<b>Storage Buffer</b>	In PBS (0.02% sodium azide)
<b>Storage Instruction</b>	Store at 4°C for three months. For long term storage store at -20°C. Aliquot to avoid repeated freezing and thawing.
<b>Note</b>	This product contains sodium azide: a POISONOUS AND HAZARDOUS SUBSTANCE which should be handled by trained staff only.

## Applications

- Western Blot (Cell lysate)

Western blot analysis of C12orf5 in EL4 cell lysate with C12orf5 polyclonal antibody (Cat # PAB13249) at (A) 0.5, (B) 1 and (C) 2 ug/mL .

- Immunohistochemistry (Formalin/PFA-fixed paraffin-embedded sections)

Immunohistochemistry of C12orf5 in human brain tissue with C12orf5 polyclonal antibody (Cat # PAB13249) at 2.5 ug/mL .

## Gene Info — C12orf5

<b>Entrez GeneID</b>	<a href="#">57103</a>
<b>Protein Accession#</b>	<a href="#">NP_065108</a>
<b>Gene Name</b>	C12orf5
<b>Gene Alias</b>	TIGAR
<b>Gene Description</b>	chromosome 12 open reading frame 5
<b>Omim ID</b>	<a href="#">610775</a>
<b>Gene Ontology</b>	<a href="#">Hyperlink</a>
<b>Gene Summary</b>	This gene is regulated as part of the p53 tumor suppressor pathway and encodes a protein with sequence similarity to the bisphosphate domain of the glycolytic enzyme that degrades fructose-2, 6-bisphosphate. The protein functions by blocking glycolysis and directing the pathway into the pentose phosphate shunt. Expression of this protein also protects cells from DNA damaging reactive oxygen species and provides some protection from DNA damage-induced apoptosis. The 12p13.32 region that includes this gene is paralogous to the 11q13.3 region. [provided by RefSeq]
<b>Other Designations</b>	TP53-induced glycolysis and apoptosis regulator transactivated by NS3TP2 protein

## Publication Reference

- [The regulation of energy generating metabolic pathways by p53.](#)

Corcoran CA, Huang Y, Sheikh MS.

Cancer Biology & Therapy 2006 Dec; 5(12):1610.

Application: WB, Human, Human mammalian cells

- [Role of Wnt10b and C/EBPalpha in spontaneous adipogenesis of 243 cells.](#)

Bennett CN, Hodge CL, MacDougald OA, Schwartz J.

Biochemical and Biophysical Research Communications 2003 Feb; 302(1):12.

- [TP53: a key gene in human cancer.](#)

Guimaraes DP, Hainaut P.

Biochimie 2002 Jan; 84(1):83.