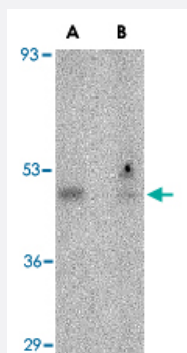


ORAI1 polyclonal antibody

Catalog # PAB13248

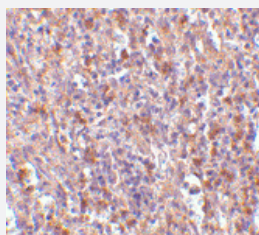
Size 100 ug

Applications



Western Blot (Tissue lysate)

Western blot analysis of ORAI1 in human ovary tissue lysate with ORAI1 polyclonal antibody (Cat # PAB13248) at 1 ug/mL in the (A) absence or (B) presence of blocking peptide.



Immunohistochemistry (Formalin/PFA-fixed paraffin-embedded sections)

Immunohistochemistry of ORAI1 in human spleen tissue with ORAI1 polyclonal antibody (Cat # PAB13248) at 10 ug/mL .

Specification

Product Description

Rabbit polyclonal antibody raised against synthetic peptide of ORAI1.

Immunogen

A synthetic peptide corresponding to N-terminus 18 amino acids of human ORAI1.

Host

Rabbit

Reactivity

Human, Mouse

Form

Liquid

Recommend Usage

Western Blot (0.5-1 ug/mL)

The optimal working dilution should be determined by the end user.

Storage Buffer	In PBS (0.02% sodium azide)
Storage Instruction	Store at 4°C for three months. For long term storage store at -20°C. Aliquot to avoid repeated freezing and thawing.
Note	This product contains sodium azide: a POISONOUS AND HAZARDOUS SUBSTANCE which should be handled by trained staff only.

Applications

- Western Blot (Tissue lysate)

Western blot analysis of ORAI1 in human ovary tissue lysate with ORAI1 polyclonal antibody (Cat # PAB13248) at 1 ug/mL in the (A) absence or (B) presence of blocking peptide.

- Immunohistochemistry (Formalin/PFA-fixed paraffin-embedded sections)

Immunohistochemistry of ORAI1 in human spleen tissue with ORAI1 polyclonal antibody (Cat # PAB13248) at 10 ug/mL .

Gene Info — ORAI1

Entrez GeneID	84876
Protein Accession#	Q96D31
Gene Name	ORAI1
Gene Alias	CRACM1, FLJ14466, ORAT1, TMEM142A
Gene Description	ORAI calcium release-activated calcium modulator 1
Omim ID	610277
Gene Ontology	Hyperlink
Gene Summary	CRACM1 is a plasma membrane protein essential for store-operated calcium entry (Vig et al., 2006 [PubMed 16645049]).[supplied by OMIM]
Other Designations	calcium release-activated calcium channel protein 1 calcium release-activated calcium modulator 1 transmembrane protein 142A

Publication Reference

- [Calcium signals mediated by STIM and Orai proteins--a new paradigm in inter-organelle communication.](#)

Soboloff J, Spassova MA, Dziadek MA, Gill DL.

Biochimica et Biophysica Acta 2006 Nov; 1763(11):1161.

- [Coronavirus replication and pathogenesis: Implications for the recent outbreak of severe acute respiratory syndrome \(SARS\), and the challenge for vaccine development.](#)

Navas-Martin SR, Weiss S.

Journal of Neurovirology 2004 Apr; 10(2):75.

- [Calcium signaling mechanisms in T lymphocytes.](#)

Lewis RS.

Annual Review of Immunology 2001 Jan; 19:497.