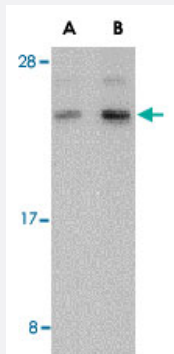


BANF1 polyclonal antibody

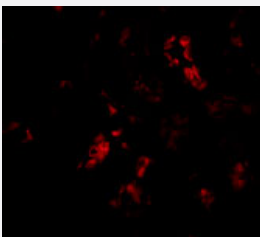
Catalog # PAB13241 Size 100 ug

Applications



Western Blot (Tissue lysate)

Western blot analysis of BANF1 in human kidney tissue lysate with BANF1 polyclonal antibody (Cat # PAB13241) at (A) 0.5 and (B) 1 ug/mL .



Immunofluorescence

Immunofluorescence of BANF1 in human kidney tissue with BANF1 polyclonal antibody (Cat # PAB13241) at 20 ug/mL .

Specification

Product Description	Rabbit polyclonal antibody raised against synthetic peptide of BANF1.
Immunogen	A synthetic peptide corresponding to C-terminus 15 amino acids of human BANF1.
Host	Rabbit
Reactivity	Human, Mouse
Form	Liquid
Recommend Usage	Western Blot (0.5-1 ug/mL) The optimal working dilution should be determined by the end user.

Storage Buffer	In PBS (0.02% sodium azide)
Storage Instruction	Store at 4°C for three months. For long term storage store at -20°C. Aliquot to avoid repeated freezing and thawing.
Note	This product contains sodium azide: a POISONOUS AND HAZARDOUS SUBSTANCE which should be handled by trained staff only.

Applications

- Western Blot (Tissue lysate)

Western blot analysis of BANF1 in human kidney tissue lysate with BANF1 polyclonal antibody (Cat # PAB13241) at (A) 0.5 and (B) 1 ug/mL .

- Immunofluorescence

Immunofluorescence of BANF1 in human kidney tissue with BANF1 polyclonal antibody (Cat # PAB13241) at 20 ug/mL .

Gene Info — BANF1

Entrez GeneID	8815
Protein Accession#	AAH05942
Gene Name	BANF1
Gene Alias	BAF, BCRP1, D14S1460, MGC111161
Gene Description	barrier to autointegration factor 1
Omim ID	603811
Gene Ontology	Hyperlink
Gene Summary	<p>The protein encoded by this gene was first identified by its ability to protect retroviruses from intra molecular integration and therefore promote intermolecular integration into the host cell genome. The protein forms a homodimer which localizes to both the nucleus and cytoplasm and is specifically associated with chromosomes during mitosis. This protein binds to double stranded DNA in a non-specific manner and also binds to LEM-domain containing proteins of the nuclear envelope. This protein is thought to facilitate nuclear reassembly by binding with both DNA and inner nuclear membrane proteins and thereby recruit chromatin to the nuclear periphery. Alternative splicing results in multiple transcript variants encoding the same protein</p>
Other Designations	-

Publication Reference

- [Solution structure of the constant region of nuclear envelope protein LAP2 reveals two LEM-domain structures: one binds BAF and the other binds DNA](#)

Cai M, Huang Y, Ghirlando R, Wilson KL, Craigie R, Clore GM.

EMBO J 2001 Aug; 20(16):4399.

- [LAP2 binding protein 1 \(L2BP1/BAF\) is a candidate mediator of LAP2-chromatin interaction.](#)

Furukawa K.

Journal of Cell Science 1999 Aug; 112(Pt 15):2485.

Application: IF, WB-Ce, Rat, FRSK cells

- [The barrier-to-autointegration protein is a host factor for HIV type 1 integration.](#)

Chen H, Engelman A.

PNAS 1998 Dec; 95(26):15270.