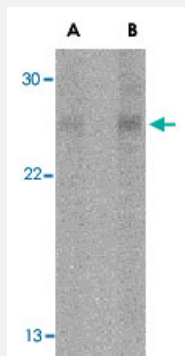


RPAIN polyclonal antibody

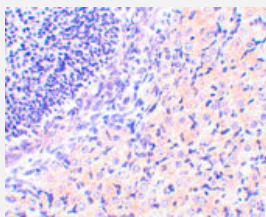
Catalog # PAB13239 Size 100 ug

Applications



Western Blot (Cell lysate)

Western blot analysis of RPAIN in Jurkat cell lysate with RPAIN polyclonal antibody (Cat # PAB13239) at (A) 1 and (B) 2 ug/mL .



Immunohistochemistry (Formalin/PFA-fixed paraffin-embedded sections)

Immunohistochemistry of RPAIN in mouse stomach tissue with RPAIN polyclonal antibody (Cat # PAB13239) at 2.5 ug/mL .

Specification

Product Description	Rabbit polyclonal antibody raised against synthetic peptide of RPAIN.
Immunogen	A synthetic peptide corresponding to C-terminus 17 amino acids of human RPAIN.
Host	Rabbit
Reactivity	Human, Mouse, Rat
Form	Liquid
Recommend Usage	Western Blot (0.5-1 ug/mL) The optimal working dilution should be determined by the end user.

Storage Buffer	In PBS (0.02% sodium azide)
Storage Instruction	Store at 4°C for three months. For long term storage store at -20°C. Aliquot to avoid repeated freezing and thawing.
Note	This product contains sodium azide: a POISONOUS AND HAZARDOUS SUBSTANCE which should be handled by trained staff only.

Applications

- Western Blot (Cell lysate)

Western blot analysis of RPAIN in Jurkat cell lysate with RPAIN polyclonal antibody (Cat # PAB13239) at (A) 1 and (B) 2 ug/mL .

- Immunohistochemistry (Formalin/PFA-fixed paraffin-embedded sections)

Immunohistochemistry of RPAIN in mouse stomach tissue with RPAIN polyclonal antibody (Cat # PAB13239) at 2.5 ug/mL .

Gene Info — RPAIN

Entrez GeneID	84268
Protein Accession#	NP_001028174
Gene Name	RPAIN
Gene Alias	HRIP, MGC4189, RIP
Gene Description	RPA interacting protein
Gene Ontology	Hyperlink
Other Designations	RAP interaction protein nuclear transporter

Publication Reference

- [Functions of human replication protein A \(RPA\): from DNA replication to DNA damage and stress responses.](#)

Zou Y, Liu Y, Wu X, Shell SM.

Journal of Cellular Physiology 2006 Aug; 208(2):267.

Application: WB, Human, Human mammalian cells, Tumors

- [Sumoylation of the novel protein hRIP{beta} is involved in replication protein A deposition in PML nuclear bodies.](#)

Park J, Seo T, Kim H, Choe J.

Molecular and Cellular Biology 2005 Sep; 25(18):8202.

Application: IF, WB, Human, HEK 293T cells

- [Nuclear import of RPA in Xenopus egg extracts requires a novel protein XRIPalpha but not importin alpha.](#)

Jullien D, Gorlich D, Laemmli UK, Adachi Y.

The EMBO Journal 1999 Aug; 18(15):4348.

Disease

- [Ductus Arteriosus](#)
- [Genetic Predisposition to Disease](#)
- [Infant](#)