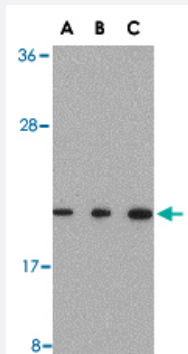


# TMED10 polyclonal antibody

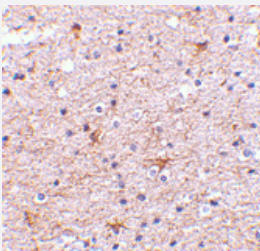
Catalog # PAB13235      Size 100 ug

## Applications



### Western Blot (Cell lysate)

Western blot analysis of TMED10 in Raji cell lysate with TMED10 polyclonal antibody (Cat # PAB13235) at (A) 0.5 and (B) 1 and (C) 2 ug/mL .



### Immunohistochemistry (Formalin/PFA-fixed paraffin-embedded sections)

Immunohistochemistry of TMED10 in human brain tissue with TMED10 polyclonal antibody (Cat # PAB13235) at 2.5 ug/mL .

## Specification

<b>Product Description</b>	Rabbit polyclonal antibody raised against synthetic peptide of TMED10.
<b>Immunogen</b>	A synthetic peptide corresponding to C-terminus 19 amino acids of human TMED10.
<b>Host</b>	Rabbit
<b>Reactivity</b>	Human, Mouse, Rat
<b>Form</b>	Liquid
<b>Recommend Usage</b>	Western Blot (0.5-1 ug/mL) The optimal working dilution should be determined by the end user.

<b>Storage Buffer</b>	In PBS (0.02% sodium azide)
<b>Storage Instruction</b>	Store at 4°C for three months. For long term storage store at -20°C. Aliquot to avoid repeated freezing and thawing.
<b>Note</b>	This product contains sodium azide: a POISONOUS AND HAZARDOUS SUBSTANCE which should be handled by trained staff only.

## Applications

- Western Blot (Cell lysate)

Western blot analysis of TMED10 in Raji cell lysate with TMED10 polyclonal antibody (Cat # PAB13235) at (A) 0.5 and (B) 1 and (C) 2 ug/mL .

- Immunohistochemistry (Formalin/PFA-fixed paraffin-embedded sections)

Immunohistochemistry of TMED10 in human brain tissue with TMED10 polyclonal antibody (Cat # PAB13235) at 2.5 ug/mL .

## Gene Info — TMED10

<b>Entrez GeneID</b>	<a href="#">10972</a>
<b>Protein Accession#</b>	<a href="#">AAD31941</a>
<b>Gene Name</b>	TMED10
<b>Gene Alias</b>	P24(Delta), S31I125, S31I125, TMP21, Tmp-21-I
<b>Gene Description</b>	transmembrane emp24-like trafficking protein 10 (yeast)
<b>Omim ID</b>	<a href="#">605406</a>
<b>Gene Ontology</b>	<a href="#">Hyperlink</a>
<b>Gene Summary</b>	This gene is a member of the EMP24/GP25L/p24 family and encodes a protein with a GOLD domain. This type I membrane protein is localized to the plasma membrane and golgi cisternae and is involved in vesicular protein trafficking. The protein is also a member of a heteromeric secretase complex and regulates the complex's gamma-secretase activity without affecting its epsilon-secretase activity. Mutations in this gene have been associated with early-onset familial Alzheimer's disease. This gene has a pseudogene on chromosome 8. [provided by RefSeq]
<b>Other Designations</b>	21 kDa transmembrane trafficking protein transmembrane emp24 domain-containing protein 10

## Publication Reference

- [TMP21 is a presenilin complex component that modulates gamma-secretase but not epsilon-secretase activity.](#)

Chen F, Hasegawa H, Schmitt-Ulms G, Kawarai T, Bohm C, Katayama T, Gu Y, Sanjo N, Glista M, Rogaeva E, Wakutani Y, Pardossi-Piquard R, Ruan X, Tandon A, Checler F, Marambaud P, Hansen K, Westaway D, St George-Hyslop P, Fraser P.  
Nature 2006 Apr; 440(7088):1208.

Application: WB-Tr, Human, HEK 293, Mouse brainsa, SH-SY5Y cells

- [Functional reconstitution of gamma-secretase through coordinated expression of presenilin, nicastrin, Aph-1, and Pen-2.](#)

Periz G, Fortini ME.

Journal of Neuroscience Research 2004 Aug; 77(3):309.

- [Tmp21 and p24A, two type I proteins enriched in pancreatic microsomal membranes, are members of a protein family involved in vesicular trafficking.](#)

Blum R, Feick P, Puype M, Vandekerckhove J, Klengel R, Nastainczyk W, Schulz I.

The Journal of Biological Chemistry 1996 Jul; 271(29):17183.

Application: WB-Ce, WB-Re, WB-Ti, Rat, Rat pancreatic acinar cells, Rat tissues, Recombinant proteins

## Disease

- [Diabetes Mellitus](#)