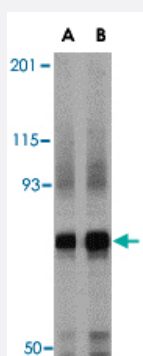


NCSTN polyclonal antibody

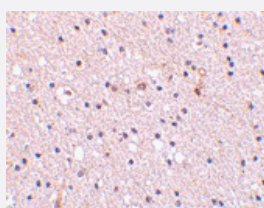
Catalog # PAB13232 Size 100 ug

Applications



Western Blot (Tissue lysate)

Western blot analysis of NCSTN in mouse brain tissue lysate with NCSTN polyclonal antibody (Cat # PAB13232) at (A) 0.5 and (B) 1 ug/mL .



Immunohistochemistry (Formalin/PFA-fixed paraffin-embedded sections)

Immunohistochemistry of NCSTN in human brain tissue with NCSTN polyclonal antibody (Cat # PAB13232) at 2.5 ug/mL .

Specification

Product Description	Rabbit polyclonal antibody raised against synthetic peptide of NCSTN.
Immunogen	A synthetic peptide corresponding to internal region 18 amino acids of human NCSTN.
Host	Rabbit
Reactivity	Human, Mouse, Rat
Form	Liquid
Recommend Usage	Western Blot (0.5-1 ug/mL) The optimal working dilution should be determined by the end user.

Storage Buffer	In PBS (0.02% sodium azide)
Storage Instruction	Store at 4°C for three months. For long term storage store at -20°C. Aliquot to avoid repeated freezing and thawing.
Note	This product contains sodium azide: a POISONOUS AND HAZARDOUS SUBSTANCE which should be handled by trained staff only.

Applications

- Western Blot (Tissue lysate)

Western blot analysis of NCSTN in mouse brain tissue lysate with NCSTN polyclonal antibody (Cat # PAB13232) at (A) 0.5 and (B) 1 ug/mL .

- Immunohistochemistry (Formalin/PFA-fixed paraffin-embedded sections)

Immunohistochemistry of NCSTN in human brain tissue with NCSTN polyclonal antibody (Cat # PAB13232) at 2.5 ug/mL .

Gene Info — NCSTN

Entrez GeneID	23385
Protein Accession#	NP_056146
Gene Name	NCSTN
Gene Alias	APH2, KIAA0253
Gene Description	nicastrin
Omim ID	605254
Gene Ontology	Hyperlink
Gene Summary	This gene encodes a Type I transmembrane glycoprotein that is an integral component of the multimeric gamma-secretase complex. The encoded protein cleaves integral membrane proteins, including Notch receptors and beta-amyloid precursor protein, and may be a stabilizing cofactor required for gamma-secretase complex assembly. The cleavage of beta-amyloid precursor protein yields amyloid beta peptide, the main component of the neuritic plaque and the hallmark lesion in the brains of patients with Alzheimer's disease; however, the nature of the encoded protein's role in Alzheimer's disease is not known for certain. Alternatively spliced transcript variants have been described, but their full-length nature has not been determined. [provided by RefSeq]
Other Designations	ATAG1874 OTTHUMP00000031839 anterior pharynx-defective 2

Publication Reference

- [Loss of nicastrin elicits an apoptotic phenotype in mouse embryos.](#)

Nguyen V, Hawkins C, Bergeron C, Supala A, Huang J, Westaway D, St George-Hyslop P, Rozmahel R.

Brain Research 2006 May; 1086(1):76.

- [Functional reconstitution of gamma-secretase through coordinated expression of presenilin, nicastrin, Aph-1, and Pen-2.](#)

Periz G, Fortini ME.

Journal of Neuroscience Research 2004 Aug; 77(3):309.

- [The cell biology of beta-amyloid precursor protein and presenilin in Alzheimer's disease.](#)

Selkoe DJ.

Trends in Cell Biology 1998 Nov; 8(11):447.

Pathway

- [Notch signaling pathway](#)

Disease

- [Alzheimer disease](#)
- [Cardiovascular Diseases](#)
- [Cognition](#)
- [Diabetes Complications](#)
- [Genetic Predisposition to Disease](#)
- [Intelligence Tests](#)
- [Metabolic Syndrome X](#)
- [Neoplasms](#)
- [Neuropsychological Tests](#)

- [Osteoporosis](#)
- [Werner syndrome](#)