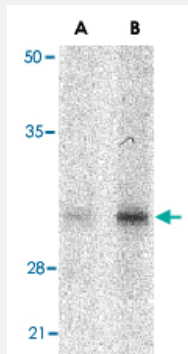


# SNAI2 polyclonal antibody

Catalog # PAB13227      Size 100 ug

## Applications



### Western Blot (Tissue lysate)

Western blot analysis of SNAI2 in human kidney tissue lysate with SNAI2 polyclonal antibody (Cat # PAB13227) at in (A) 1 and (B) 2 ug/mL .

## Specification

<b>Product Description</b>	Rabbit polyclonal antibody raised against synthetic peptide of SNAI2.
<b>Immunogen</b>	A synthetic peptide corresponding to internal region 14 amino acids of human SNAI2.
<b>Host</b>	Rabbit
<b>Reactivity</b>	Human, Mouse
<b>Form</b>	Liquid
<b>Recommend Usage</b>	Western Blot (1-2 ug/mL) The optimal working dilution should be determined by the end user.
<b>Storage Buffer</b>	In PBS (0.02% sodium azide)
<b>Storage Instruction</b>	Store at 4°C for three months. For long term storage store at -20°C. Aliquot to avoid repeated freezing and thawing.
<b>Note</b>	This product contains sodium azide: a POISONOUS AND HAZARDOUS SUBSTANCE which should be handled by trained staff only.

## Applications

- Western Blot (Tissue lysate)

Western blot analysis of SNAI2 in human kidney tissue lysate with SNAI2 polyclonal antibody (Cat # PAB13227) at in (A) 1 and (B) 2 ug/mL .

## Gene Info — SNAI2

Entrez GeneID	<a href="#">6591</a>
Protein Accession#	<a href="#">O43623</a>
Gene Name	SNAI2
Gene Alias	MGC10182, SLUG, SLUGH1, WS2D
Gene Description	snail homolog 2 (Drosophila)
Omim ID	<a href="#">172800</a> <a href="#">602150</a> <a href="#">608890</a>
Gene Ontology	<a href="#">Hyperlink</a>
Gene Summary	This gene encodes a member of the Snail family of C2H2-type zinc finger transcription factors. The encoded protein acts as a transcriptional repressor that binds to E-box motifs and is also likely to repress E-cadherin transcription in breast carcinoma. This protein is involved in epithelial-mesenchymal transitions and has antiapoptotic activity. Mutations in this gene may be associated with sporadic cases of neural tube defects. [provided by RefSeq]
Other Designations	OTTHUMP00000195093 neural crest transcription factor SLUG slug (chicken homolog), zinc finger protein slug homolog, zinc finger protein snail 2

## Publication Reference

- [Slug expression is an independent prognostic parameter for poor survival in colorectal carcinoma patients.](#)

Shioiri M, Shida T, Koda K, Oda K, Seike K, Nishimura M, Takano S, Miyazaki M.

British Journal of Cancer 2006 Jun; 94(12):1816.

Application: IHC-P, Human, Colorectal carcinoma

- [The transcription factors Slug and Snail act as repressors of Claudin-1 expression in epithelial cells.](#)

Martínez-Estrada OM, Cullerés A, Soriano FX, Peinado H, Bolós V, Martínez FO, Reina M, Cano A, Fabre M, Vilaró S.  
The Biochemical Journal 2006 Mar; 394(Pt 2):449.

Application: Func, Dog, MDCK (NBL-2)

- [Control of cell behavior during vertebrate development by Slug, a zinc finger gene.](#)

Nieto MA, Sargent MG, Wilkinson DG, Cooke J.  
Science 1994 May; 264(5160):835.

## Pathway

- [Adherens junction](#)

## Disease

- [Cleft Lip](#)
- [Cleft Palate](#)