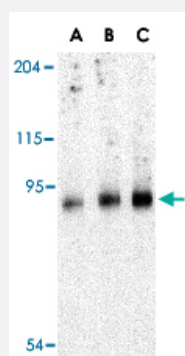


TRPC6 polyclonal antibody

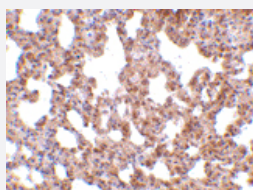
Catalog # PAB13220 Size 100 ug

Applications



Western Blot (Tissue lysate)

Western blot analysis of TRPC6 in mouse lung tissue lysate with TRPC6 polyclonal antibody (Cat # PAB13220) at (A) 0.5, (B) 1 and (C) 2 ug/mL .



Immunohistochemistry (Formalin/PFA-fixed paraffin-embedded sections)

Immunohistochemistry of TRPC6 in mouse lung tissue with TRPC6 polyclonal antibody (Cat # PAB13220) at 10 ug/mL .

Specification

Product Description	Rabbit polyclonal antibody raised against synthetic peptide of TRPC6.
Immunogen	A synthetic peptide corresponding to C-terminus 14 amino acids of human TRPC6.
Host	Rabbit
Reactivity	Human, Mouse, Rat
Form	Liquid
Recommend Usage	Western Blot (0.5-1 ug/mL) The optimal working dilution should be determined by the end user.

Storage Buffer	In PBS (0.02% sodium azide)
Storage Instruction	Store at 4°C for three months. For long term storage store at -20°C. Aliquot to avoid repeated freezing and thawing.
Note	This product contains sodium azide: a POISONOUS AND HAZARDOUS SUBSTANCE which should be handled by trained staff only.

Applications

- Western Blot (Tissue lysate)

Western blot analysis of TRPC6 in mouse lung tissue lysate with TRPC6 polyclonal antibody (Cat # PAB13220) at (A) 0.5, (B) 1 and (C) 2 ug/mL .

- Immunohistochemistry (Formalin/PFA-fixed paraffin-embedded sections)

Immunohistochemistry of TRPC6 in mouse lung tissue with TRPC6 polyclonal antibody (Cat # PAB13220) at 10 ug/mL .

Gene Info — TRPC6

Entrez GeneID	7225
Protein Accession#	AAH93658
Gene Name	TRPC6
Gene Alias	FLJ11098, FLJ14863, FSGS2, TRP6
Gene Description	transient receptor potential cation channel, subfamily C, member 6
Omim ID	603652 603965
Gene Ontology	Hyperlink
Gene Summary	The protein encoded by this gene forms a receptor-activated calcium channel in the cell membrane. The channel is activated by diacylglycerol and is thought to be under the control of a phosphatidylinositol second messenger system. Activation of this channel occurs independently of protein kinase C and is not triggered by low levels of intracellular calcium. Defects in this gene are a cause of focal segmental glomerulosclerosis 2 (FSGS2). [provided by RefSeq]
Other Designations	transient receptor potential channel 6

Publication Reference

- [Astragaloside IV prevents high glucose-induced podocyte apoptosis via downregulation of TRPC6.](#)

Yao XM, Liu YJ, Wang YM, Wang H, Zhu BB, Liang YP, Yao WG, Yu H, Wang NS, Zhang XM, Peng W.

Molecular Medicine Reports 2016 Jun; 13(6):5149.

Application: WB-Ce, Mouse, Mouse podocytes

- [Impaired Orai1-mediated Resting Ca²⁺ Entry Reduces the Cytosolic \[Ca²⁺\] and Sarcoplasmic Reticulum Ca²⁺ Loading in Quiescent Junctophilin 1 Knock-out Myotubes.](#)

Li H, Ding X, Lopez JR, Takeshima H, Ma J, Allen PD, Eltit JM.

The Journal of Biological Chemistry 2010 Dec; 285(50):39171.

Application: WB, Human, Myotube

- [The diacylglycerol-sensitive TRPC3/6/7 subfamily of cation channels: functional characterization and physiological relevance.](#)

Dietrich A, Kalwa H, Rost BR, Gudermann T.

Pflugers Archiv 2005 Oct; 451(1):72.

Application: WB-Tr, Human, HEK 293 cells

- [The TRPC3/6/7 subfamily of cation channels.](#)

Trebak M, Vazquez G, Bird GS, Putney JW Jr.

Cell Calcium 2003 May; 33(5-6):451.

Application: IP, WB, Human, HEK 293 cells

- [A unified nomenclature for the superfamily of TRP cation channels.](#)

Montell C, Birnbaumer L, Flockerzi V, Bindels RJ, Bruford EA, Caterina MJ, Clapham DE, Harteneck C, Heller S, Julius D, Kojima I, Mori Y, Penner R, Prawitt D, Scharenberg AM, Schultz G, Shimizu N, Zhu MX.

Molecular Cell 2002 Feb; 9(2):229.

Disease

- [Genetic Predisposition to Disease](#)
- [Glomerulonephritis](#)
- [Glomerulosclerosis](#)
- [Hypertension](#)
- [Liver Cirrhosis](#)