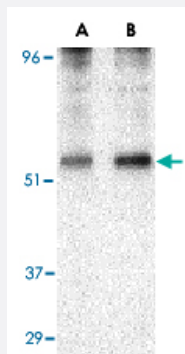


# PLIN3 polyclonal antibody

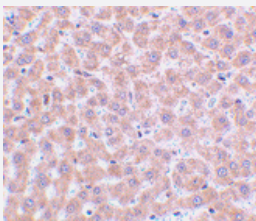
Catalog # PAB13216      Size 100 ug

## Applications



### Western Blot (Cell lysate)

Western blot analysis of PLIN3 in EL4 cell lysate with PLIN3 polyclonal antibody (Cat # PAB13216) at (A) 0.5 and (B) 1 ug/mL .



### Immunohistochemistry (Formalin/PFA-fixed paraffin-embedded sections)

Immunohistochemistry of PLIN3 in rat liver tissue with PLIN3 polyclonal antibody (Cat # PAB13216) at 2 ug/mL .

## Specification

<b>Product Description</b>	Rabbit polyclonal antibody raised against synthetic peptide of PLIN3.
<b>Immunogen</b>	A synthetic peptide corresponding to N-terminus 14 amino acids of human PLIN3.
<b>Host</b>	Rabbit
<b>Reactivity</b>	Human, Mouse, Rat
<b>Form</b>	Liquid
<b>Recommend Usage</b>	Western Blot (0.5-1 ug/mL) The optimal working dilution should be determined by the end user.

<b>Storage Buffer</b>	In PBS (0.02% sodium azide)
<b>Storage Instruction</b>	Store at 4°C for three months. For long term storage store at -20°C. Aliquot to avoid repeated freezing and thawing.
<b>Note</b>	This product contains sodium azide: a POISONOUS AND HAZARDOUS SUBSTANCE which should be handled by trained staff only.

## Applications

- Western Blot (Cell lysate)

Western blot analysis of PLIN3 in EL4 cell lysate with PLIN3 polyclonal antibody (Cat # PAB13216) at (A) 0.5 and (B) 1 ug/mL .

- Immunohistochemistry (Formalin/PFA-fixed paraffin-embedded sections)

Immunohistochemistry of PLIN3 in rat liver tissue with PLIN3 polyclonal antibody (Cat # PAB13216) at 2 ug/mL .

## Gene Info — PLIN3

<b>Entrez GeneID</b>	<a href="#">10226</a>
<b>Protein Accession#</b>	<a href="#">O60664</a>
<b>Gene Name</b>	PLIN3
<b>Gene Alias</b>	MGC11117, MGC2012, PP17, TIP47, M6PRBP1
<b>Gene Description</b>	mannose-6-phosphate receptor binding protein 1
<b>Omim ID</b>	<a href="#">602702</a>
<b>Gene Ontology</b>	<a href="#">Hyperlink</a>
<b>Gene Summary</b>	Mannose 6-phosphate receptors (MPRs) deliver lysosomal hydrolase from the Golgi to endosome s and then return to the Golgi complex. The protein encoded by this gene interacts with the cytoplasmic domains of both cation-independent and cation-dependent MPRs, and is required for endosome-to-Golgi transport. This protein also binds directly to the GTPase RAB9 (RAB9A), a member of the RAS oncogene family. The interaction with RAB9 has been shown to increase the affinity of this protein for its cargo. Multiple transcript variants encoding different isoforms have been found for this gene
<b>Other Designations</b>	MPR-BINDING PROTEIN, 47-KD MPR-binding protein 47 kDa cargo selection protein (mannose 6 phosphate receptor binding protein) cargo selection protein TIP47 mannose 6 phosphate receptor binding protein 1 placental protein 17 tail-interacting protein, 47 kD

## Publication Reference

- [TIP47 is a key effector for Rab9 localization.](#)

Aivazian D, Serrano RL, Pfeffer S.

The Journal of Cell Biology 2006 Jun; 173(6):917.

- [Visualization of Rab9-mediated vesicle transport from endosomes to the trans-Golgi in living cells.](#)

Barbero P, Bittova L, Pfeffer SR.

The Journal of Cell Biology 2002 Feb; 156(3):511.

- [Role of Rab9 GTPase in facilitating receptor recruitment by TIP47.](#)

Carroll KS, Hanna J, Simon I, Krise J, Barbero P, Pfeffer SR.

Science 2011 May; 292(5520):1373.

Application: WB-Re, Recombinant proteins