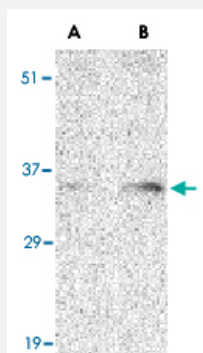


BAG1 polyclonal antibody

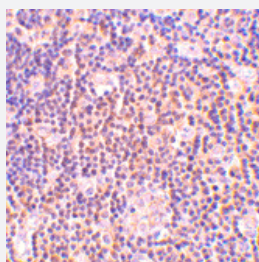
Catalog # PAB13210 Size 100 ug

Applications



Western Blot (Cell lysate)

Western blot analysis of BAG1 in PC-3 cell lysate with BAG1 polyclonal antibody (Cat # PAB13210) at (A) 1 and (B) 2 ug/mL .



Immunohistochemistry (Formalin/PFA-fixed paraffin-embedded sections)

Immunohistochemistry of BAG1 in human lymph node tissue with BAG1 polyclonal antibody (Cat # PAB13210) at 2 ug/mL

Specification

Product Description	Rabbit polyclonal antibody raised against synthetic peptide of BAG1.
Immunogen	A synthetic peptide corresponding to N-terminus 14 amino acids of human BAG1.
Host	Rabbit
Reactivity	Human, Mouse
Form	Liquid
Recommend Usage	Western Blot (1-2 ug/mL) The optimal working dilution should be determined by the end user.

Storage Buffer	In PBS (0.02% sodium azide)
Storage Instruction	Store at 4°C for three months. For long term storage store at -20°C. Aliquot to avoid repeated freezing and thawing.
Note	This product contains sodium azide: a POISONOUS AND HAZARDOUS SUBSTANCE which should be handled by trained staff only.

Applications

- Western Blot (Cell lysate)

Western blot analysis of BAG1 in PC-3 cell lysate with BAG1 polyclonal antibody (Cat # PAB13210) at (A) 1 and (B) 2 ug/mL .

- Immunohistochemistry (Formalin/PFA-fixed paraffin-embedded sections)

Immunohistochemistry of BAG1 in human lymph node tissue with BAG1 polyclonal antibody (Cat # PAB13210) at 2 ug/mL

Gene Info — BAG1

Entrez GeneID	573
Protein Accession#	NP_004314
Gene Name	BAG1
Gene Alias	RAP46
Gene Description	BCL2-associated athanogene
Omim ID	601497
Gene Ontology	Hyperlink
Gene Summary	The oncogene BCL2 is a membrane protein that blocks a step in a pathway leading to apoptosis or programmed cell death. The protein encoded by this gene binds to BCL2 and is referred to as BCL2-associated athanogene. It enhances the anti-apoptotic effects of BCL2 and represents a link between growth factor receptors and anti-apoptotic mechanisms. At least three protein isoforms are encoded by this mRNA through the use of a non-AUG (CUG) start site, and alternative, downstream, AUG translation initiation sites. [provided by RefSeq]
Other Designations	BCL2-associated athanogene 1

Publication Reference

- [Expression of BAG-1 protein correlates with aggressive behavior of prostate cancers.](#)

Krajewska M, Turner BC, Shabaik A, Krajewski S, Reed JC.

Prostate 2006 Jun; 66(8):801.

Application: IHC-P, Human, Human prostate carcinoma

- [BAG-1 family of cochaperones in the modulation of nuclear receptor action.](#)

Cato AC, Mink S.

The Journal of Steroid Biochemistry and Molecular Biology 2001 Nov; 78(5):379.

Application: IHC, WB-Tr, Human, Yeast, Human cervical cancer, Mammalian, Yeast cells

- [Bag1 functions in vivo as a negative regulator of Hsp70 chaperone activity.](#)

Nollen EA, Brunsting JF, Song J, Kampinga HH, Morimoto RI.

Molecular and Cellular Biology 2000 Feb; 20(3):1083.

Disease

- [Cardiovascular Diseases](#)
- [Diabetes Mellitus](#)
- [Edema](#)
- [Head and Neck Neoplasms](#)
- [Narcolepsy](#)
- [Neoplasm Recurrence](#)
- [Neoplasms](#)